

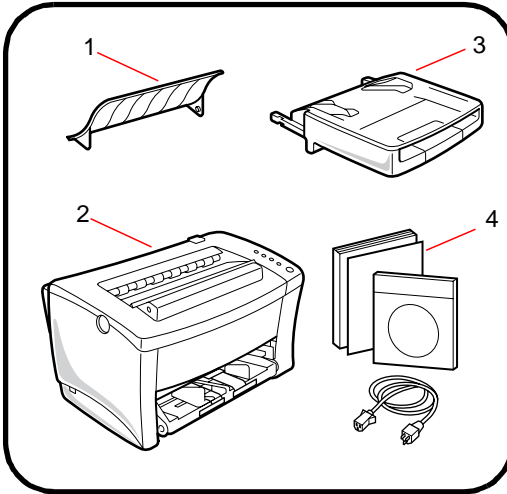
Contents

Step 1	Unpacking the Printer	2
Reference 1	Printer Parts	4
Reference 2	Control Panel	5
Step 2	Attaching the Face-Down Tray and Tray 1	6
Step 3	Loading Paper.....	7
Step 4	Connecting the Power Cord	8
Step 5	Turning the Power On/Off	8
Step 6	Printing a Test Page	9
Step 7	Connecting the Printer to the Computer (Local Connection).....	10
Step 8	Installing the Printer Driver	11
Reference 3	Troubleshooting	13

Unpacking the Printer

Step 1

Before operating your printer, read the Set-Up Instructions carefully from cover to cover. Use this guide for reference.



1. Face-down tray

2. Printer

3. Tray 1

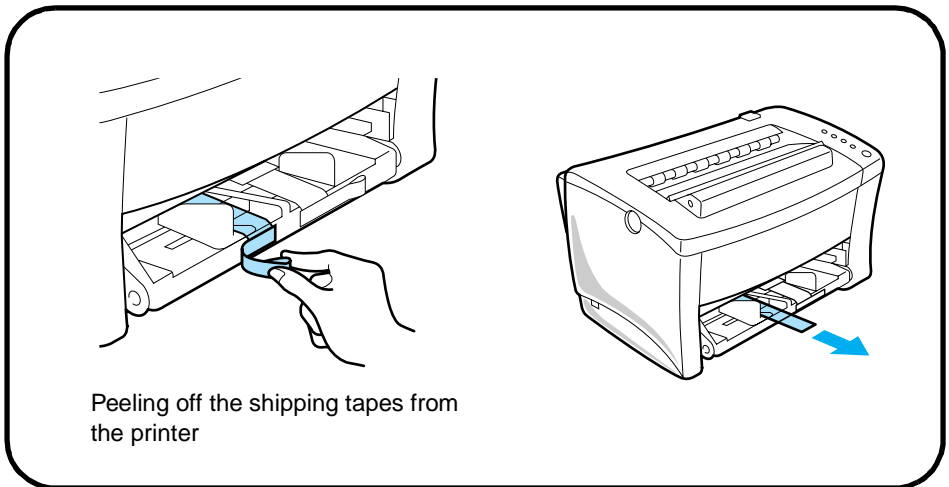
4. Accessories

User Kit including:

- Quick Guide
- User Manual
- CD-ROM

Power cord

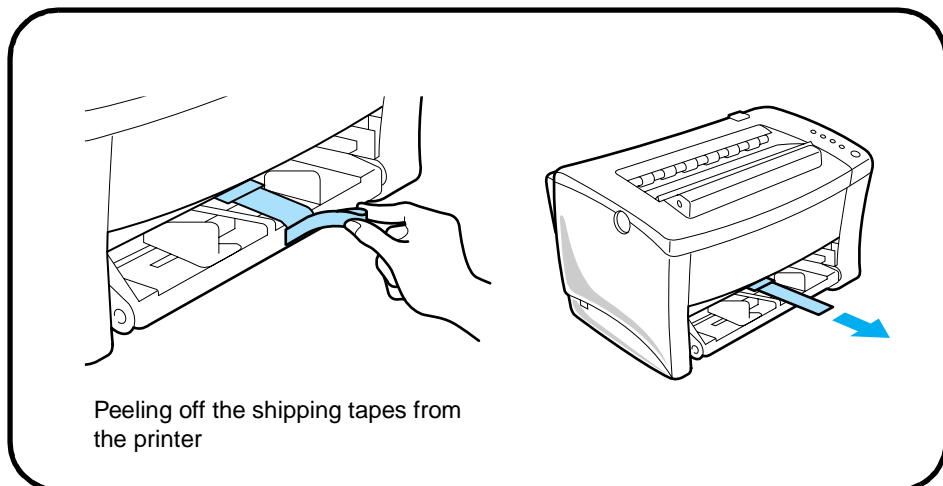
1. Take the items and accessories shown above out of the carton.
2. Remove the plastic bag and peel off the shipping tape from the printer.



Peeling off the shipping tapes from the printer

Step 1

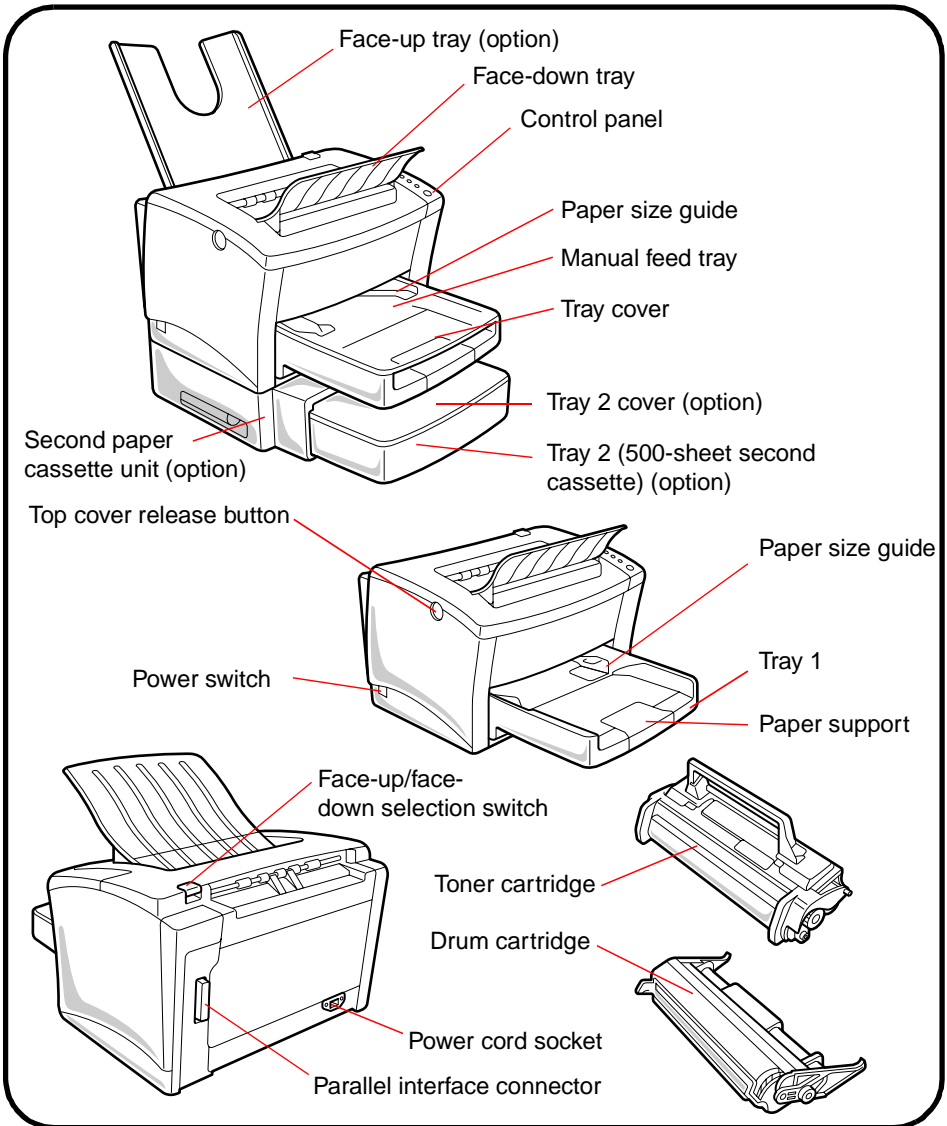
3. Pull out the cushion from the paper feed inlet.



4. Pull out the cushion from the manual feed inlet.

Printer Parts

Reference 1



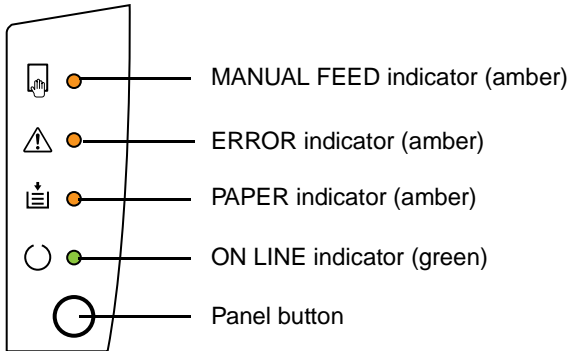
Note

- The face-up tray, second paper cassette unit (with Tray 2), SIMM and NIC (Network Interface Card) are all available options for your printer. For more information, please refer to the User's Manual.

Control Panel

Reference 2

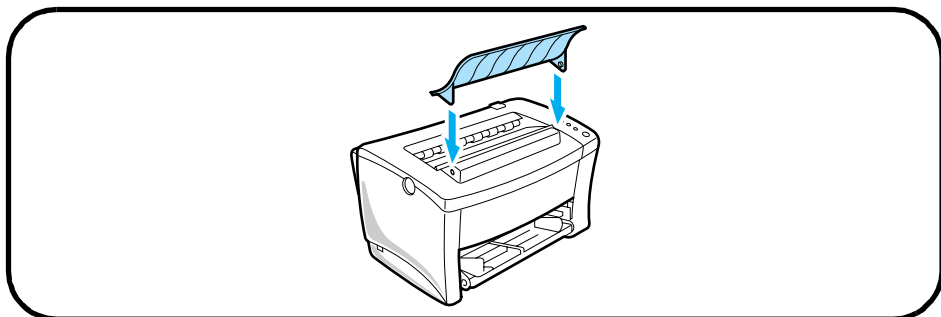
The control panel has four indicator lights and one button.



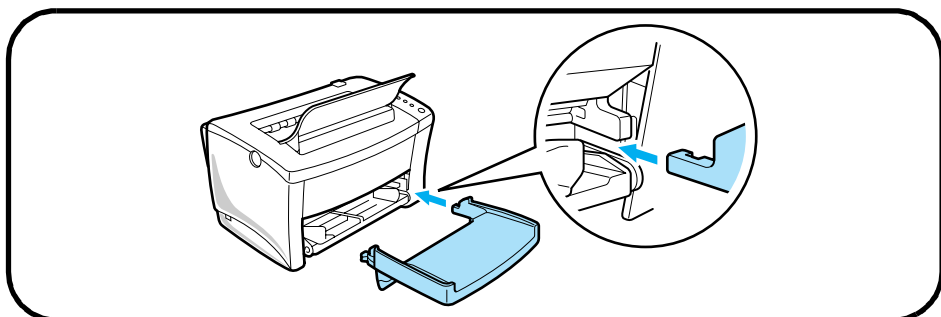
	Printer is online (ready).		<ul style="list-style-type: none"> Receiving data via parallel interface. Printing the test page. 		Printer is off.
	Printer is standing by waiting for manual paper feed.		(Blinking slowly) Power save mode.		Out of paper. Load more paper to continue printing.
	Paper misfeed. Clear the paper misfeed and continue printing.		Cover open. Close the cover.		<ul style="list-style-type: none"> Print job is too complex. Paper size mismatch. Adobe Memory Booster is in use.

Attaching the Face-Down Tray and Tray 1

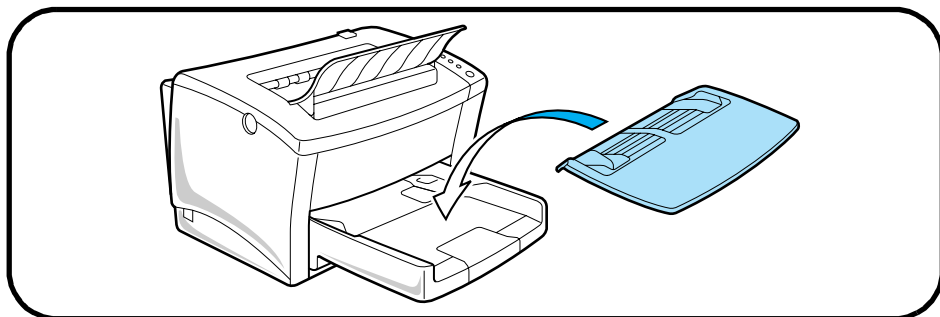
Step 2



1. Insert the 3 tabs of the face-down tray into the catch holes located along the top of the printer unit. Set the hooks that are located on both sides of the tray into the coordinating holes of the printer unit as shown in the illustration.



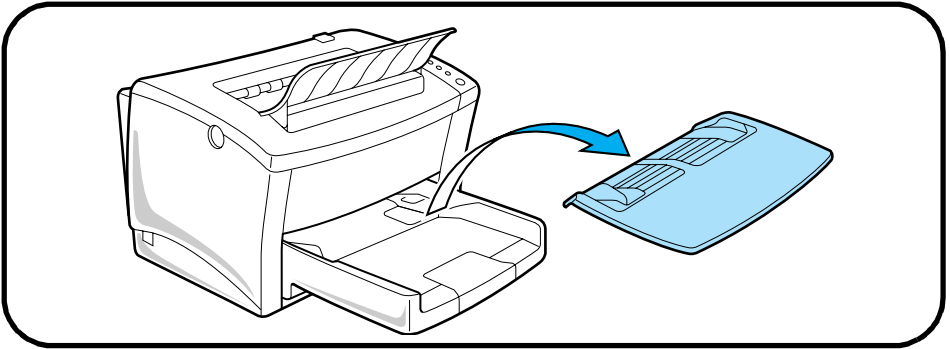
2. Using the left and right slots in the printer as guides, gently push Tray 1 until it cannot be inserted any further.



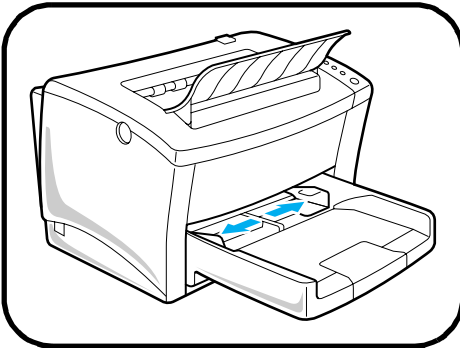
3. Attach the cover onto Tray 1.

Loading Paper

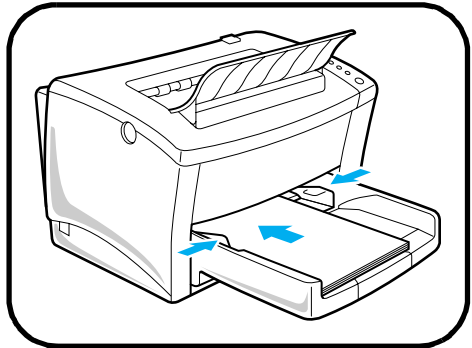
Step 3



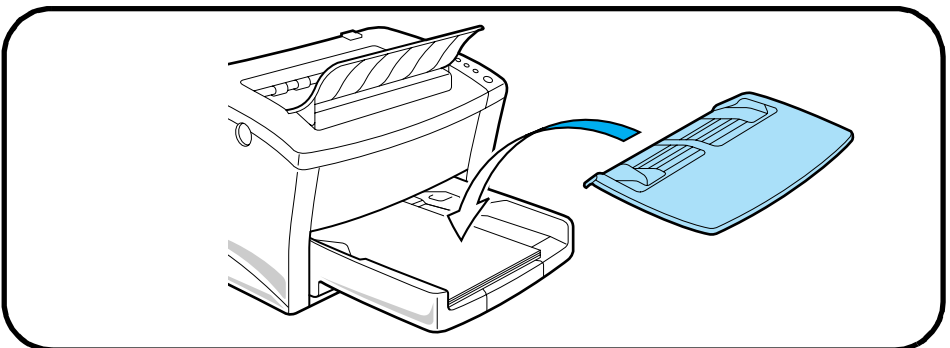
1. Remove the cover from Tray 1.



2. Open the paper size guides.



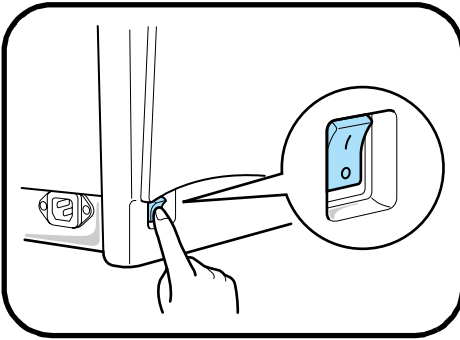
3. Place several pages of paper in Tray 1 and adjust the paper size guides.



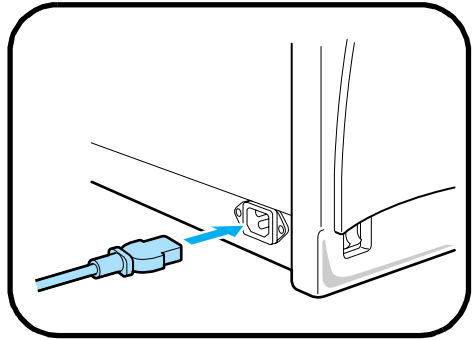
4. Replace the tray cover.

Connecting the Power Cord

Step 4



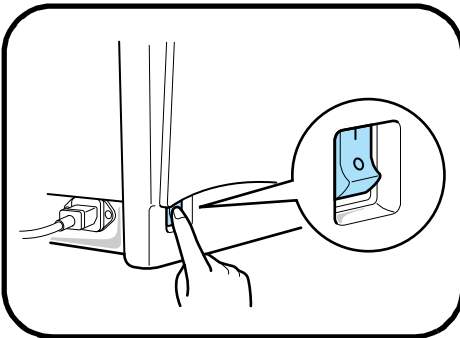
1. Make sure that the printer's power switch is in the **O** (Off) position.



2. Connect one end of the power cord that comes with the printer to the power cord socket. Plug the other end into a power outlet.

Turning the Power On/Off

Step 5



Turning the power ON

After connecting the printer to a power outlet, press the power switch to the **I** (On) position. Turning on the printer causes all of the indicators on the control panel to light, which indicates that the printer is warming up. In about 20 seconds, only the **READY** indicator remains lit, indicating that the printer is ready to print.

Turning the power OFF

Press the power switch to the **O** (Off) position to turn the printer off.

Note

DO NOT turn the power OFF while:

- printing
- the printer is receiving the data from the computer (the indicator on the control panel is blinking)
- resetting the printer

Printing a Test Page

Step 6

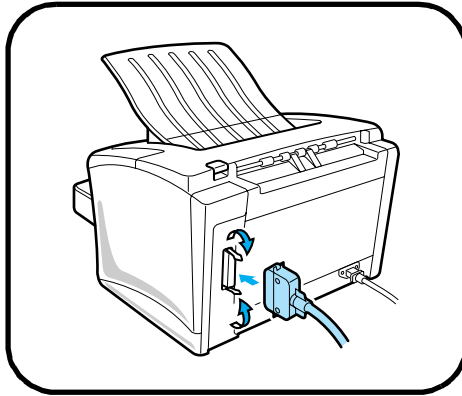
1. Turn the printer on.
2. Make sure that paper is loaded into the printer's feeding tray.
3. Make sure that the MANUAL FEED, PAPER and ERROR indicators are off, and the READY indicator is on.
4. Press the panel button for 10 seconds to start the print Self-Test Page operation.

Sample



Connecting the Printer to the Computer (Local Connection) *Step 7*

1. Turn the printer and the computer off.
2. Connect one end of the interface cable to the parallel port of the computer.



3. Connect the other end of the cable to the parallel connector on the back of the printer. Secure the cable using the two clips on the parallel connector.

Installing the Printer Driver

Step 8

Install the printer driver to control printing from your computer. You can install the printer driver for Windows 95, Windows 3.1, Windows NT4.0, or MS-DOS from the **Minolta PagePro** CD-ROM. Follow the instructions described below and for more details, see the User's Manual.

Windows 95

Installing from CD-ROM

1. Turn on your computer and start up Windows 95.
2. Insert the **Minolta PagePro Installer** CD-ROM into your computer's CD-ROM drive.
3. The opening screen automatically appears on the screen.
4. Follow the instructions, and select the type of installation you want.

Windows 3.1

Installing from CD-ROM

1. Turn on your computer and start up Windows 3.1.
2. Insert the **Minolta PagePro Installer** CD-ROM into your computer's CD-ROM drive. For this example, we will assume that the CD-ROM is located in drive D:.
3. From the **Program Manager**, double-click **Main** to display the Main group, and then double-click **File Manager**.
4. Open the drive D:\ window, then double-click the D:\drivers\pp8l\win311\gb\pg\drv**setup.exe** icon to start up the installer.
5. Follow the instructions, and select the type of installation you want.

Windows NT4.0

For detailed information on Windows NT4.0, refer to the “Printer Driver User’s Manual for Windows NT4.0”.

The driver is located on CD-ROM, for this example we assume that the CD-ROM is located in drive **D:**, in following folder

D:\drivers\pp8l\nt40\gb\pcl\drv

MS-DOS

Installing DOS Printing Utilities

1. Connect your printer to the parallel port of your computer.
2. Turn on your computer and start up DOS.
3. Turn on your printer and make sure it is online.
4. Insert the CD-ROM that comes with your printer. For this example, we will assume that the CD-ROM is located in drive **D:**.
5. From the DOS prompt, create a directory on your hard disk for the DOS software.

For example;

```
Type: md c:\mldos
```

6. Change to the directory you created in the above step.

```
Type: cd c:\mldos
```

7. Copy the Minolta PagePro 8e DOS Printing Utility program file from the CD-ROM.

```
Type: copy d:\drivers\pp8L\dos\dosdisk.exe
```

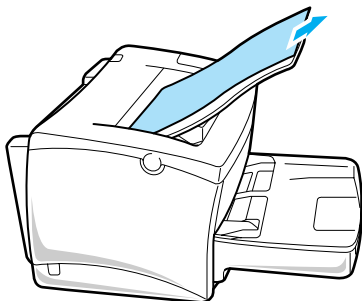
8. Use the following command to uncompress the DOS Printing Utilities program file.

```
Type: dosdisk
```

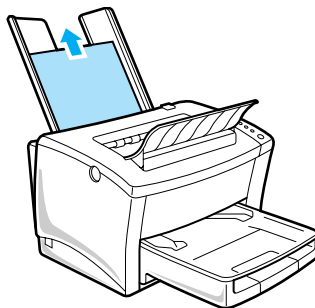
Clearing a Paper Misfeed

Remove the misfed sheet of paper by pulling it in the direction indicated by the arrow.

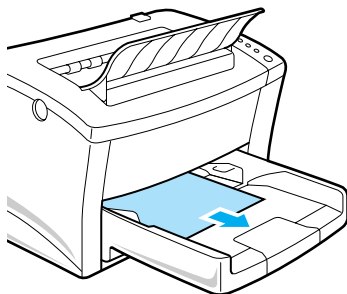
Face-down tray



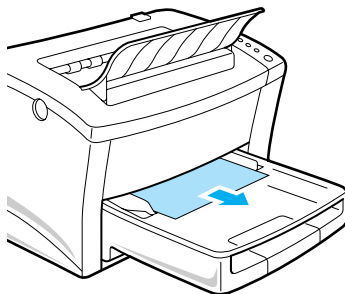
Face-up tray (Option)



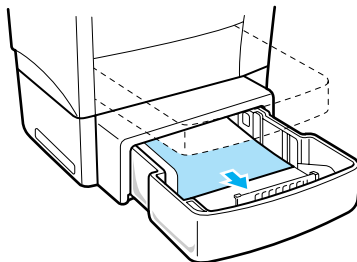
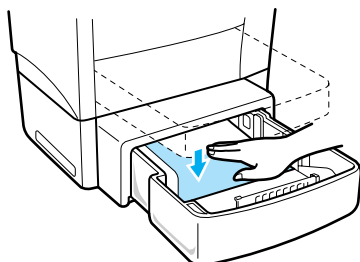
Tray 1



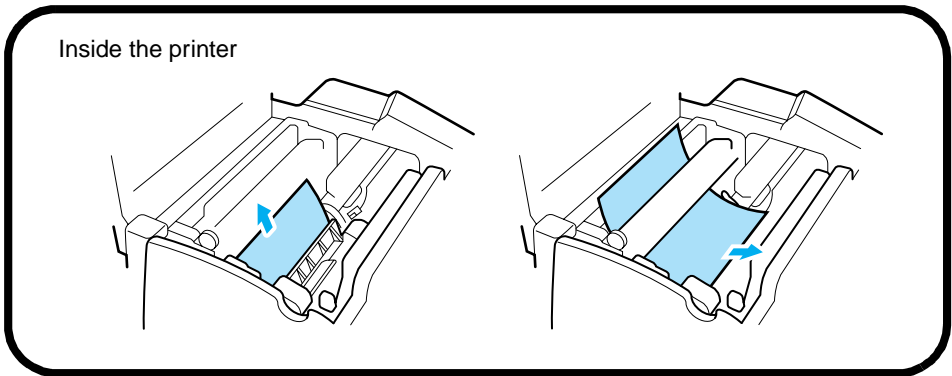
Manual feed tray



Tray 2 (Option)



Clearing a Paper Misfeed



Caution

- The fusing unit inside the printer can become very hot during operation. Do not touch the area to avoid injury.
- Be careful to avoid touching the image transfer roller.

Solving Print Quality Problems

- Remove the toner cartridge and shake it left and right a few times to distribute remaining toner.
- Remove the toner cartridge and check it for damage. Replace the toner cartridge if necessary.
- Remove the drum cartridge and check it for damage. Replace the drum cartridge if necessary.
- Clean the inside of the printer. (Refer to the User's Manual.)
- Change the toner save setting of the printer driver and try to print again.

For more details, refer to the "Troubleshooting" and "Maintenance" section of the User's Manual.

Reference 3

No output

- Make sure that the printer is plugged in.
- Make sure that power is turned on.
- Make sure that you are using the correct type of printer cable.
- Make sure that your computer's communication port settings are correct.

For more details, refer to the User's Manual.

Safety Information

Laser Safety

This is a page printer which operates by means of a laser. There is no possibility of danger from the laser, provided the printer is operated according to the instructions in this manual.

Since radiation emitted by the laser is completely confined within protective housing, the laser beam cannot escape from the machine during any phase of user operation.

Internal Laser Radiation

Maximum Radiation Power: 0.73 (mW) at laser aperture of the print head unit.

Wavelength: 770 – 810 (nm).

This product employs a Class IIIb Laser Diode.

Laser Diode and Scanning Polygon Mirror are incorporated in the print head unit.

The print head unit is NOT A FIELD SERVICE ITEM.

Therefore, the print head unit should not be opened under any circumstance.

WARNING: Use of controls, adjustments or performance of procedures other than those specified in this manual may result in hazardous radiation exposure.

This is a semiconductor laser. The maximum power of the laser diode is 5 mW and the wavelength is 770-810 nm.

For Denmark Users

ADVARSEL: Usynlig laserstråling ved åbning, når sikkerhedsafbrydere er ude af funktion. Undgå udsættelse for stråling.

Klasse 1 laser produkt der opfylder IEC825 sikkerheds kravene.

Foreword

For Finland, Sweden Users

VAROITUS: Laitteen käyttäminen muulla kuin tässä käyttöohjeessa mainitulla tavalla saattaa altistaa käyttäjän turvallisuusluokan 1 ylittävälle näkymättömälle lasersäteilylle.

VARNING: Om apparaten används på annat sätt än i denna bruksanvisning specificerats, kan användaren utsättas för osynlig laserstrålning som överskrider gränsen för laser klass 1.

VARO!: Avattaessa ja suojalukitus ohitettaessa olet alttiina näkymättömälle lasersäteilylle. Äjä katso säteeseen.

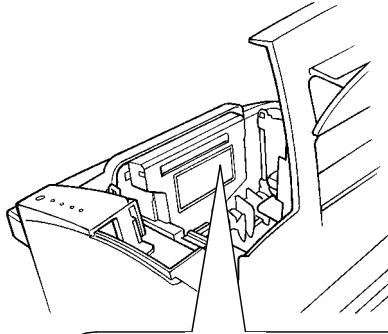
VARNING!: Osynlig laserstråining när denna del är öppnad och spärren är urkopplad. Betrakta ej stråien.

For Norway Users

ADVARSEL: Dersom apparatet brukes på annen måte enn spesifisert i denne bruksanvisning, kan brukeren utsettes for usynlig laserstråling som overskrider grensen for laser klasse 1.

Dette er en halvleder laser. Maksimal effeekt til laserdiode er 5mW og bølgelengde er 770-810 nm.

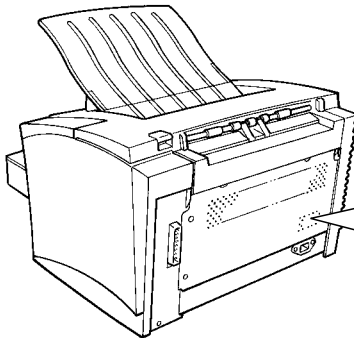
WARNING LABEL



注意- この装置はレーザー光を放射します。レーザー光を直接見たり、触るとはしないでください。
 CAUTION- INVISIBLE LASER RADIATION WHEN OPEN AVOID EXPOSURE TO BEAM
 VORSICHT- UNSICHTBARE LASERSTRAHLUNG WENN ABDECKUNG GEÖFFNET NICHT DEM STRAHL AUSSETZEN
 ADVARSEL- USYNLIG LASERSTRÅLING NÅR DEKSEL ÅPNES UNNGÅ EKSPONERING FOR STRÅLING
 VARO! AVAATTAESSA OLET ALTTIINA NÄKYMÄTTÖMÄLLE LASERBÄTELVILLE ÄLÄ KATSO SÄTÄHEEN
 ADVARSEL- USYNLIG LASERSTRÅLING VED ÅBNING UNDGÅ UDSÆTTTELSE FOR STRÅLING
 WARNING- ODYMLIG LASERSTRÅLNING NÅR DENNA DEL ÄR ÖPPNAD STRÅLNING ÄR FARLIG
 注意： 当装置はレーザー光を放射します。レーザー光を直接見たり、触るとはしないでください。

This device must be used with a shielded interface (Parallel) cable and a shielded network (10BASE-T) cable. The use of non-shield cables is likely to result in interference with radio communications and is prohibited under 89/336/EEC rules.

WARNING LABEL



Model: PagePro 8L
 SERIAL NO.
 88-000001-00 0000-00

ONLY CONNECT THE EQUIPMENT TO AN APPROVED SHIELDED CABLE.
 OTHERWISE, RADIO INTERFERENCE MAY OCCUR.
 OTHERWISE, RADIO INTERFERENCE MAY OCCUR.
 PLEASE REFER TO THE USER MANUAL FOR FURTHER INFORMATION.
 PLEASE REFER TO THE USER MANUAL FOR FURTHER INFORMATION.

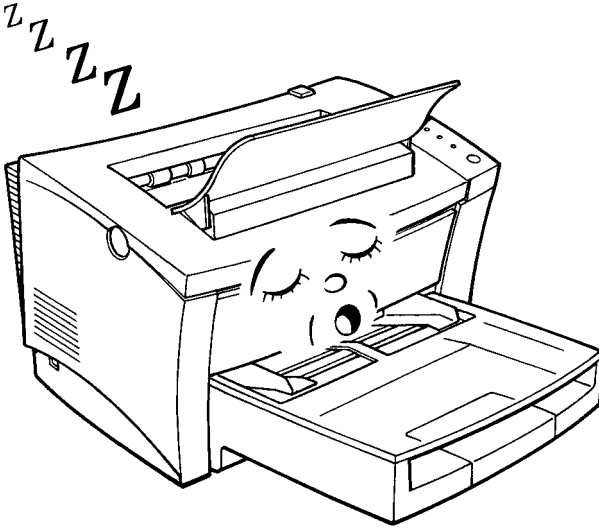
MINOLTA CO., LTD.

CLASS I LASER PRODUCT
LASER-KLASSE I PRODUKT

Foreword



As an ENERGY STAR® Partner, we have determined that this machine meets the ENERGY STAR® guidelines for energy efficiency.



What is an ENERGY STAR® Printer ?

ENERGY STAR® Printers have a feature that allows them to automatically “go to sleep” after a period of inactivity. This auto-feature can reduce a printer’s annual electricity costs by over 60 percent.

Welcome

And thank you for selecting a Minolta PagePro 8L Printer!

To assist you to easily set up and operate your printer and install the Printer Driver software, the Minolta PagePro 8L Printer comes with a comprehensive *User Kit*. The Minolta PagePro 8L *User Kit* consists of a *Quick Guide for Installation and Reference*, an *User's Manual* and a *Software Package*.

Before you operate your printer, read the *Set-Up Instructions* in the *Quick Guide for Installation and Reference* carefully.

The *User's Manual* explains the functions of the printer and how it operates. It also provides you with troubleshooting tips as well as general precautions you should observe when operating the printer. To ensure the top performance and effective use of your printer, read this manual carefully from cover to cover, and keep it at hand for later reference.

No part of this document may be reproduced, transmitted, transcribed, stored in a retrieval system, or translated into other languages without the express written prior consent of Minolta Co., Ltd.

The contents of this manual are subject to change without notice.

Trademark Acknowledgements

LaserJet IIP and PCL are registered trademarks of Hewlett-Packard Company.

Centronics is a registered trademark of Centronics Inc.

MS-DOS, Microsoft, and Windows are registered trademarks of Microsoft Corporation.

IBM is a registered trademark of International Business Machines Corporation.

Adobe and PrintGear are trademarks of Adobe Systems, Inc.

PagePro is a trademark of Minolta in Europe, Japan and Asia.

CONTENTS

Chapter 1: Introduction

Features	1-1
Printer Parts and Accessories	1-2
Control Panel	1-4
Indicator Lights	1-4
Control Panel Button	1-6
Reset to Factory Defaults	1-6
Generate a Print Settings Page	1-6
Form Feed	1-6
Pause/Resume	1-7
Exit the Power Save Mode	1-7

Chapter 2: Setting-Up

Installation Precautions	2-1
Selecting a Location for the Printer	2-1
Power Source	2-2
Space Requirements	2-3
Operational Precautions	2-4
Operating Environment	2-4
Printer	2-4
Printer Supplies	2-6

Setting-Up	2-7
Installing the Face-Down Tray	2-7
Installing Tray 1	2-7
Connecting the Power Cord	2-9
Loading Paper	2-10
Turning on the Printer	2-12
Testing the Printer	2-13
Connecting to a Computer	2-14
Options	2-15
Second Paper Cassette Unit	2-15
Installing the Second Paper Cassette Unit	2-15
Face-Up Tray	2-17
Installing the Face-Up Tray	2-17
Selecting output direction (printed side up or down)	2-17
SIMM (Single In-line Memory Module)	2-19
Installing the optional SIMM	2-19
Network Interface Card (NIC)	2-22

Chapter 3: Using the Printer

Printing Paper	3-1
Type	3-1
Size	3-1

Standard size	3-1
Non-Standard size (Tray 1 only)	3-1
Loading Paper	3-2
Loading Paper onto Tray 1	3-2
Loading Paper onto Tray 2	3-5
Manual Paper Feed	3-8
Printing on Envelopes	3-10

Chapter 4: Printer Driver

Introduction	4-1
System Requirements	4-1
Installing PagePro 8L Printer Driver	
Under Windows 95	4-2
Installing PagePro 8L Printer Driver	4-2
To uninstall the PagePro 8L Printer Driver	4-3
Installing PagePro 8L Printer Driver	
Under Windows 3.1	4-6
Installing the PagePro 8L Printer Driver	4-6
To uninstall the PagePro 8L Printer Driver	4-7
Using the Minolta PagePro 8L Printer Driver	4-8
Starting Up the Printer Driver in Windows 95 ...	4-8
Starting Up the Printer Driver in Windows 3.1	4-10
Settings	4-11
Common Buttons	4-11

Setup Tab	4-12
Paper Source Tab	4-17
Image Control Tab	4-18
Accessories Tab	4-20
Advanced Tab	4-21
DOS Printing Utilities	4-24
Installing the Printer Software Under DOS	4-24
Accessing the DOS Control Panel	4-25
To access the Printer Control Panel	4-25
To exit the Printer Control Panel	4-26
Using the DOS Control Panel	4-26
MAIN MENU	4-26
Control Printing (pause, reset, eject)	4-27
Change Printer Settings	4-28
Change LaserJet IIP Emulation Settings	4-30
Print Sample Pages	4-31
Change Status Monitor Settings	4-32
Change Printer Port	4-33
Exit to DOS	4-33
DOS Status Monitor	4-34
Auto Loading the DOS Status Monitor	4-34
Using the DOS Status Monitor	4-34
Windows NT 4.0	4-36

Installation from a Floppy Diskette4-37

Chapter 5: Windows Status Monitor

Using the Windows Status Monitor5-1

- Displaying the Windows Status Monitor5-1
- Using the Windows Status Monitor Menu5-2
- Changing the Printer Driver5-3
- Using the Maximized View5-4
 - General Tab5-4
 - Change Printer Tab5-6
 - Alerts Tab5-7
 - Preferences Tab5-8

Chapter 6: Maintenance

Replacing the Toner Cartridge6-1

- To replace the toner cartridge6-1

Replacing the Drum Cartridge6-4

- To replace the drum cartridge6-4

Cleaning the Printer6-8

- Cleaning the Outside of the Printer6-8
- Cleaning the Paper Transport Roller6-8

Chapter 7: Troubleshooting

Clearing a Paper Misfeed7-1

- Paper Output Misfeed (Face-down tray)7-1
- Paper Output Misfeed (Face-up tray)7-2
- Paper Input Misfeed (from Tray 1)7-2
- Paper Input Misfeed
(from Manual Feed Tray)7-3
- Paper Input Misfeed
(from Second Paper Cassette Unit)7-3
- Inside the Printer7-4

Print Quality Problems7-5

- Blank pages7-5
- Black pages7-5
- Printout too light7-6
- Printout too dark7-6
- Blurred background7-7
- Uneven print density7-7
- Irregularities7-7
- White or black lines7-8
- Toner smudges7-8
- No output7-9
 - Are you using the correct type of
printer cable?7-9
 - Are your computer's communications
port settings correct?7-9

Chapter 8: Specifications

PagePro 8L Printer8-1
Second Paper Cassette Unit (Option).....8-3
Interface Connector and Cable8-4
SIMM (Option)8-5

Appendix A: Glossary

Appendix B: Index

General Information

Declaration of Conformity 1
End User License Agreement..... 2
Addresses MINOLTA-Partners in Europe 10
MINOLTA Guarantee Certificate 12
We do good service..... 16

Chapter

Introduction

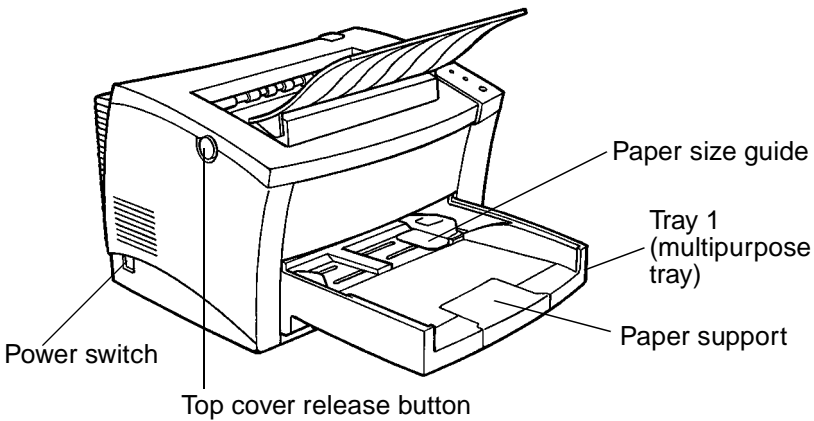
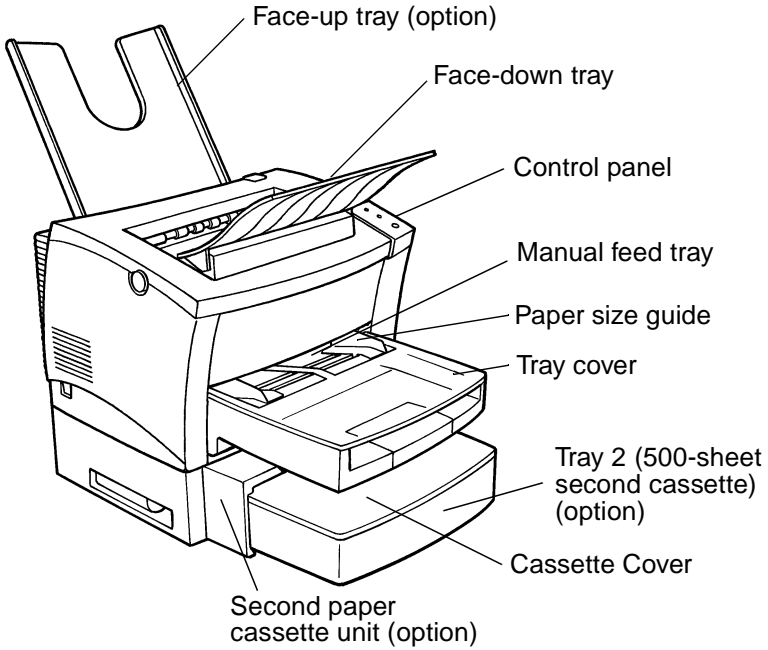
1

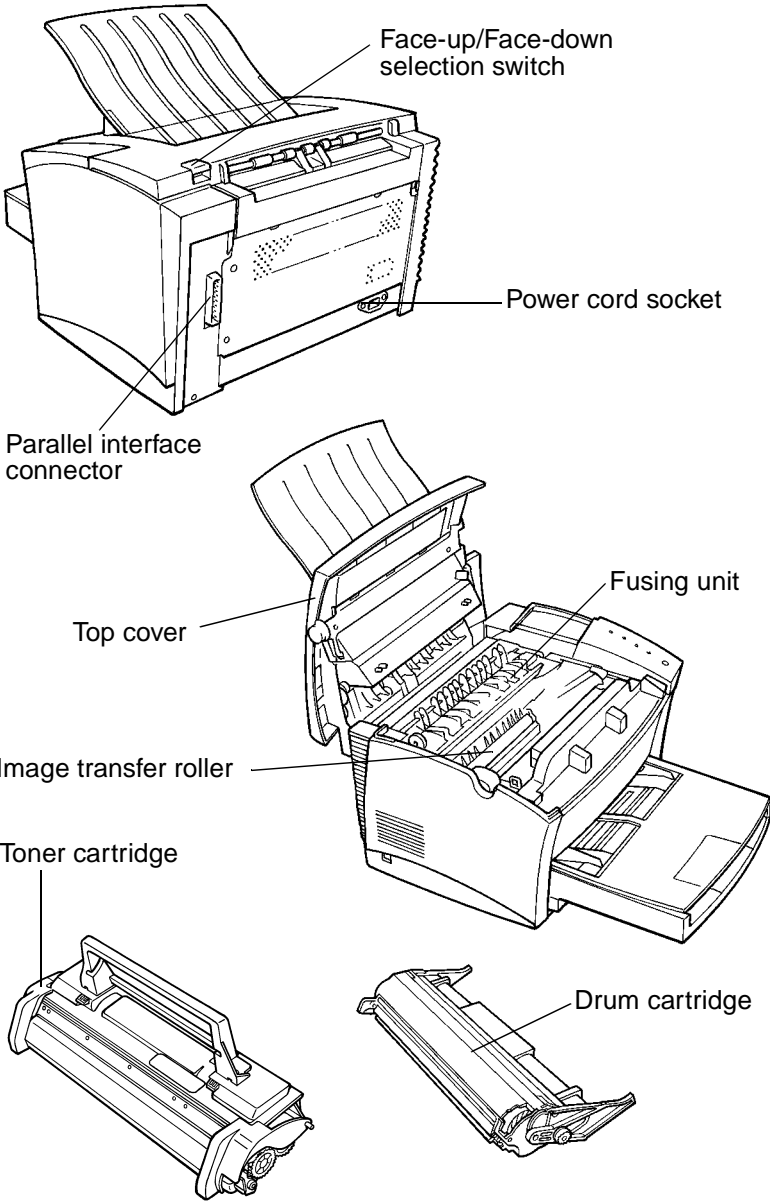
Features

The Minolta PagePro 8L printer is a laser printer developed exclusively for use with the Windows 95, Windows 3.1, Windows NT4.0 and MS-DOS operating systems.

- This printer comes with PageWorks 8L software which uses Adobe PrintGear technology.
 - High speed performance
 - Easy to use networking
 - Special features like watermark printing, booklet printing, poster or N-up printing and 2-sided printing.
 - Windows Status Monitor — Displays simultaneous printer status information as well as reports the progress of the current print job.
- Compact laser printer with HP LaserJet IIP emulation
- Real 600dpi (dots per inch) resolution
- Prints eight A4/Letter-size pages per minute
- New toner and drum cartridges that are smaller and easier to install.
- Fine Micro-Toning (Fine-MT) cartridges for clearer and sharper images
- Fine-ART (Advanced Resolution Technology) for resolution that actually exceeds 600 dpi.






Printer Parts and Accessories





Control Panel

The control panel has four indicator lights and one button.

-  ○ _____ **Manual Feed indicator (amber)**
-  ○ _____ **Error indicator (amber)**
-  ○ _____ **Paper indicator (amber)**
-  ○ _____ **Ready indicator (green)**
-  _____ **Panel button**

Indicator Lights

The four indicator lights turn on or off, or blink in combination to let you know the current status of the printer. You can find out details of the printer’s status by checking the information that appears on your computer screen.

Indicator Lights				Printer Status
Manual	Error	Paper	Ready	
Off	Off	Off	On	Printer is on line (ready).
Off	Off	Off	Blinking	Printer is busy (printing, receiving data, processing data, or waiting for paper feed, warming up).
Off	Off	Off	Off	Printer is paused or off line.
Blinking	Off	Off	Off	Printer is standing by waiting for manual paper feed.
Off	Off	Off	Blinking Slowly	Power save mode.

Indicator Lights				Printer Status
Manual	Error	Paper	Ready	
Off	Off	Blinking	Off	Out of paper. Load more paper to continue printing.
Off	On	On	Off	Paper misfeed. Clear the paper misfeed and continue printing.
Off	On	Off	Off	Cover open. Close the cover.
Off	Blinking	Off	On	<ul style="list-style-type: none"> • Page data is too complex to print. • Paper size mismatch. • Adobe Memory Booster is in use.
Off	Off	Off	Double Blink	Blinking every two seconds indicates printer is waiting with data in memory. Press the button to perform a form feed and return to On Line (Ready).
On	On	On	Off	Hardware error. Contact a Minolta dealer.

Control Panel Button

Depending on the status of the printer, the control panel button performs any one of the following operations.

- Reset to factory defaults
- Generate a print settings page
- Form feed
- Take printer offline or put online
- Exit the power save mode

Reset to Factory Defaults

Use the following procedure whenever you want to reset the printer to its factory default settings.

1. Turn off power.
2. Turn on the power while pressing the control panel button. Do not release the control panel button.
3. Release the control panel button only after the indicator lights have started to blink (they will first turn on and then off again).

Generate a Print Settings Page

Hold down the control panel button for about ten seconds to print a sheet that shows the current printer settings.

Form Feed

Pressing the control panel button while the Ready indicator light is double-blinking performs a form feed.

Pause/Resume

Pressing the control panel button while the Ready indicator light is on will pause the printer (or take it offline). Pressing the control panel button while the printer is paused or offline will cause the printer to resume (or put it online).

Exit the Power Save Mode

Pressing the control panel button while the printer is in the power save mode causes the printer to warm up and become ready to print.

Chapter

Setting-Up

2

Installation Precautions

Note the following important precautions when selecting a location for the printer and when connecting it to a power source.

Selecting a Location for the Printer

A proper location helps to ensure that your printer provides you with the long service life for which it is designed. Double-check to make sure that the location you select has the following characteristics.

- ✓ Choose a location that is well-ventilated.
- ✓ Make sure there is no chance of ammonia or other organic gasses being generated in the area.
- ✓ The power outlet you plan to connect to for power should be nearby and unobstructed.
- ✓ Make sure that the printer is not exposed to direct sunlight.
- ✓ Avoid areas in the direct airflow of air conditioners, heaters, or ventilators, and areas subjected to temperature and humidity extremes.
- ✓ Choose a sturdy, level surface where the printer will not be exposed to strong vibration.
- ✓ Keep the printer away from any objects that might block its heat vents.
- ✓ Do not locate the printer near curtains or other combustible objects.
- ✓ Choose an area where there is no possibility of the printer being splashed with water or other liquids.
- ✓ Make sure that the surrounding area is clean, dry, and free of dust.

Power Source

The following are the power source requirements for this printer.

- Power source: 220-240 V at 50-60 Hz
- Voltage fluctuation: Within 220 V–10%, 240 V + 10%
- Frequency fluctuation: Within $\pm 0.3\%$

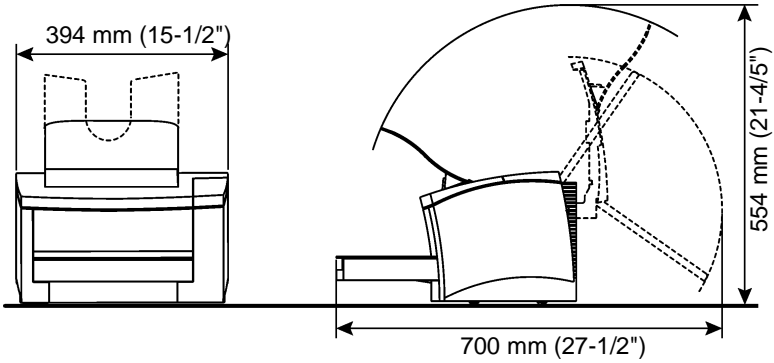
Note

- Use a power source with minimal voltage and frequency fluctuation.
- Only use an outlet that is rated for the voltage capacity specified for this printer.
- Be sure to plug the power cord all the way into the outlet. The outlet should be located near the printer and be easily accessible so you can unplug the power cord immediately should any problem occur.
- Make sure the outlet you use is visible, and not hidden behind the printer or any other object.
- If any other electrical equipment is plugged into the same outlet, make sure that the capacity of the outlet is not exceeded.
- If you use an extension cord, make sure its capacity is greater than the power consumption of the printer. Using an extension cord with a lower capacity creates the danger of fire.
- Never use a multiple socket to connect other appliances or machines to the same outlet being used to power the printer.

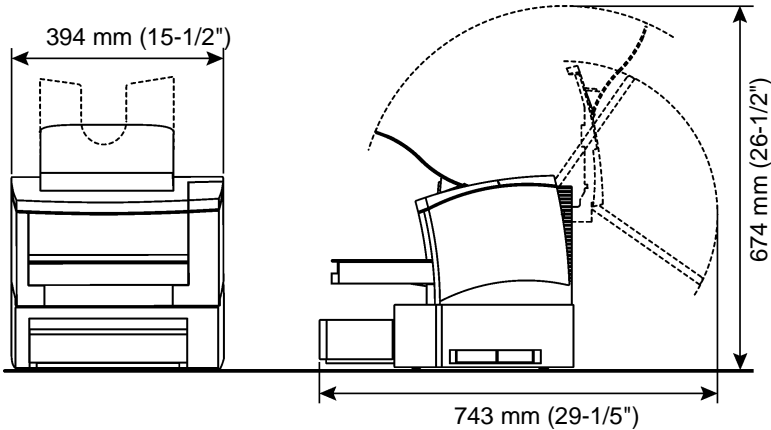
Space Requirements

Be sure to provide space around the printer as indicated below, to ensure easier printer operation, paper and toner replacement, and maintenance.

With optional face-up tray



With optional second paper cassette unit and optional face-up tray



Operational Precautions

Note the following important precautions whenever using the printer.

Operating Environment

The following describes the operating environment required when using the printer.

- Temperature: 10°C to 35°C (50°F to 95°F) with fluctuation of 10°C (18°F) per hour
- Humidity: 15% to 85% with fluctuation of 20% per hour

Printer

The following describes precautions that should be taken when using the printer.

- Never turn the printer off or open any of its covers during a print operation.
- Never locate flammable gas, flammable liquid or any object that generates magnetic force near the printer.
- When unplugging the power cord, always grasp the plug and never pull on the cord. A damaged cord creates the danger of fire or electrical shock.
- Never touch the power cord when your hands are wet. Doing so creates the danger of electrical shock.
- Always unplug the power cord before moving the printer. Failure to do so can damage the power cord, creating the danger of fire or electrical shock.
- Always unplug the power cord if you do not plan to use the printer for a long time.

- Never try to remove any secured panel or cover. The interior of the printer contains high-voltage circuitry which creates the danger of electrical shock when exposed.
- Never try to modify the printer. Doing so creates the danger of fire or electrical shock.
- Never place any heavy objects on the power cord, pull on it or bend it. Doing so creates the danger of fire or electrical shock.
- Always make sure the printer is not placed on the electrical cord or the communications cables of any other electrical equipment. Also make sure that cords and cables do not get into the printer's mechanism. Any of these conditions create the danger of malfunction and fire.
- Always take care so that paper clips, staples, or other small pieces of metal do not get into the printer through its vents or other openings. Such objects create the danger of fire or electrical shock.
- Do not allow water or other liquids to spill on or near the printer. Fire or electrical shock can occur should water or liquid come into contact with the printer.
- Should liquid or any piece of metal accidentally get inside the printer, immediately turn it off, unplug the power cord, and contact a Minolta dealer. Failure to take this immediate action creates the danger of fire or electrical shock.
- Whenever the printer emits unusually high amounts of heat, smoke, an unusual odor, or noise, immediately turn it off, unplug it, and contact a Minolta dealer. Failure to take this immediate action creates the danger of fire or electrical shock.

Printer Supplies

Note the following precautions when handling printer supplies such as the toner cartridge, the drum cartridge, and paper.

- Avoid storing printer supplies in the following locations.
 - ✓ Areas subjected to direct sunlight. Additionally, the drum cartridge must be protected from fluorescent light.
 - ✓ Areas exposed to open flame.
 - ✓ Areas subject to high humidity.
 - ✓ Areas subjected to large amounts of dust.
- Keep paper that has been removed from its wrapper, but not yet loaded onto the printer tray, in a sealed plastic bag and store it in a cool, dark location.
- Use only original the MINOLTA toner cartridge.
- Keep supplies out of the reach of children.
- Should your hands become soiled with toner, immediately wash them with soap and water.

Note

- | |
|---|
| <ul style="list-style-type: none">• Whenever you remove the drum cartridge from the printer, immediately wrap it with a cloth to protect it from overexposure to light. |
|---|

Setting-Up

See the *Quick Guide for Installation and Reference* that comes with your *User Kit* before unpacking.

Set-up the printer according to the following instructions.

Note

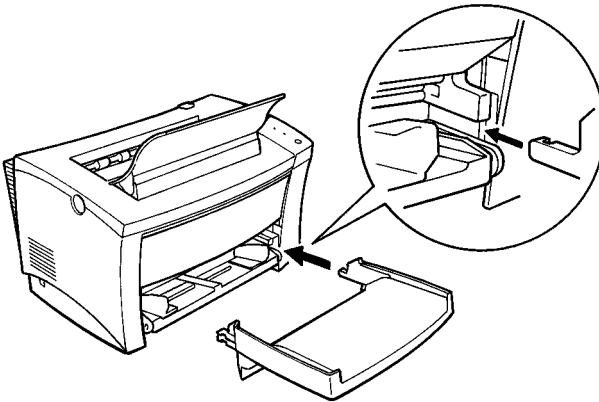
- Always use a shielded interface cable. Use of an unshielded cable can result in radio interference with data.
- Keep all the boxes and packing materials that the printer comes in for later use when transporting the printer.

Installing the Face-Down Tray

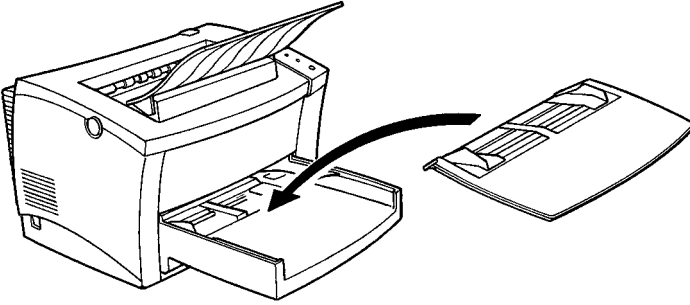
Install the face-down tray by aligning its tabs into the position holders located on the upper portion of the printer.

Installing Tray1

- 1 Using the left and right slots in the printer as guides, gently push Tray1 until it cannot be inserted any further.

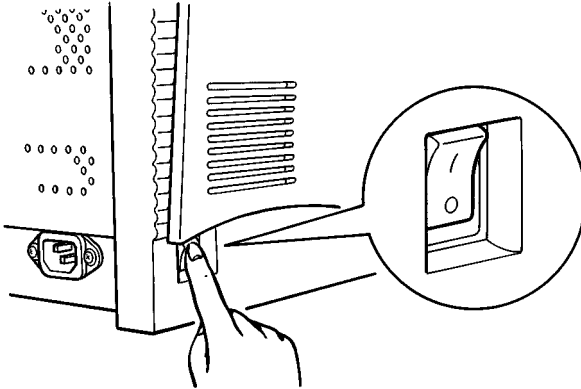


2 Attach the cover onto Tray1.

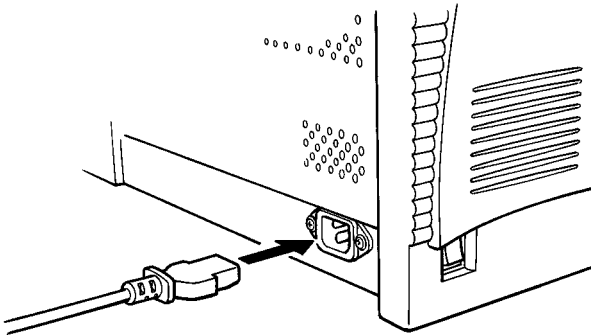


Connecting the Power Cord

- 1 Make sure that the printer's power switch is in the ○ (Off) position.

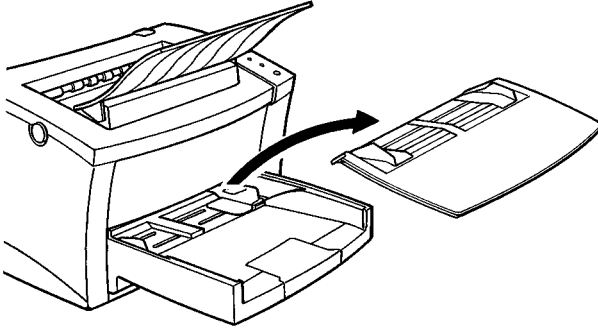


- 2 Connect one end of the power cord that comes with the printer to the power cord socket. Plug the other end into a power outlet.

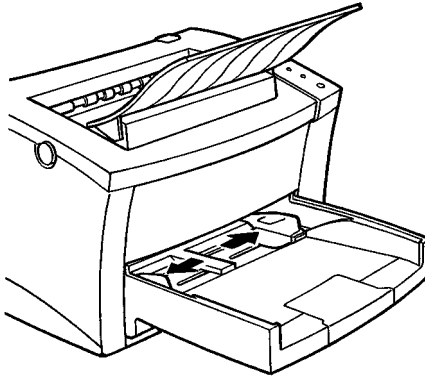


Loading Paper

- 1 Remove the cover from Tray 1.

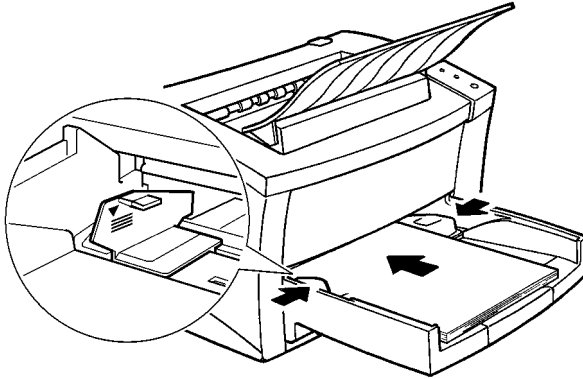


- 2 Open the paper size guides.



- 3 Fan out a stack of plain paper and align the edges.

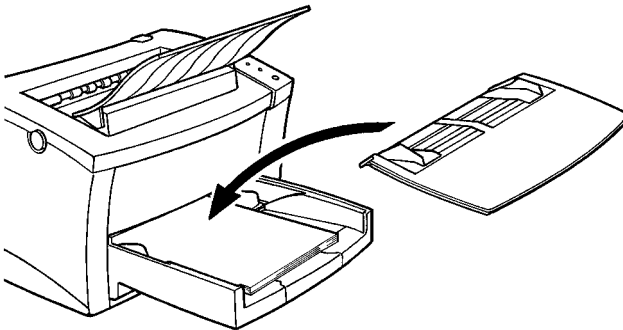
- 4 Place the paper stack onto the tray, print-side up. Secure the stack by adjusting the paper guides.



Note

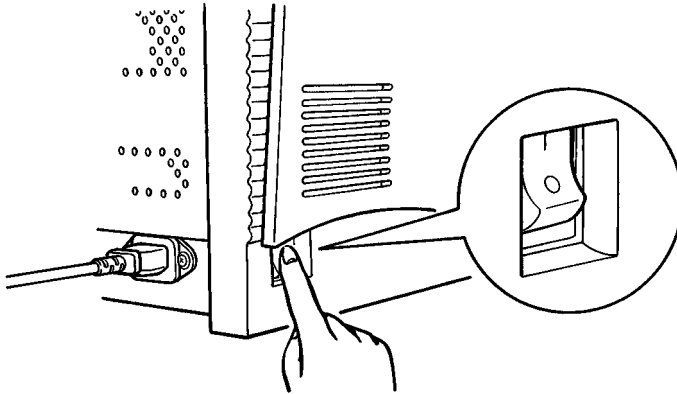
- A maximum level mark on the paper size guide shows how high you can stack paper on Tray 1. Make sure that paper is stacked no higher than this mark.

- 5 Replace the cover onto Tray 1.



Turning on the Printer

After connecting the printer to a power outlet, press the power switch to turn it on.



Turning on the printer causes all the indicators on the control panel to light, which indicates that the printer is warming up. In about 20 seconds, only the READY indicator remains lit, indicating that the printer is ready to print.

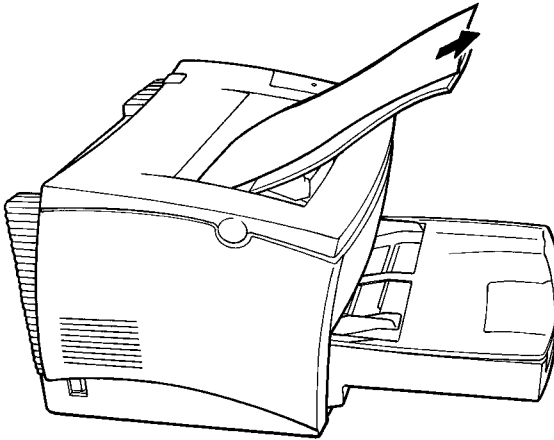
Note

- If you turn the printer off, wait at least 10 seconds before turning it on again.
- The printer automatically enters a power saving mode if it does not receive any print commands for about 15 minutes. Whenever the printer receives a print command while in the power saving mode, it starts to warm up again and takes about 20 seconds before it is ready to print.

Testing the Printer

Before connecting to a computer, perform the following procedure to print a Self-Test Page and see if the printer is working correctly.

- 1 Place the paper onto Tray 1.
- 2 Make sure that both the MANUAL FEED, PAPER and ERROR indicators are off, and the READY indicator is on. This indicates there is no existing error condition and no data remaining to be printed.
- 3 Press the panel button for about 10 seconds to start the Self-Test Page print operation.

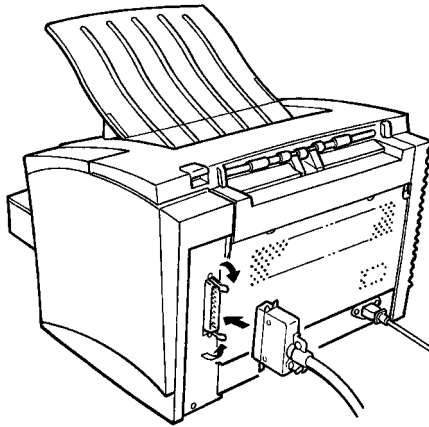


Note

- See Chapter 7 of this manual for information on what to do if the self-test page does not print when you press the panel button.
- It is only possible to print the test page on A4-, B5-, Letter- or Executive-sized paper.

Connecting to a Computer

- 1 Make sure that the printer as well as the computer you are connecting it to are turned off.
- 2 Connect one end of the interface cable to the parallel port of the computer.
- 3 Connect the other end of the cable to the parallel connector on the back of the printer. Secure the cable using the two clips on the parallel connector.



See page 8-4 of this *User's Manual* for cable specifications and pin assignments.

Options

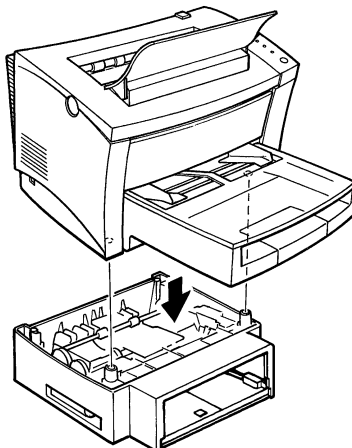
This section describes the optional items that are available for this printer: a second paper cassette unit, face-up tray, SIMMs and the network interface card.

Second Paper Cassette Unit

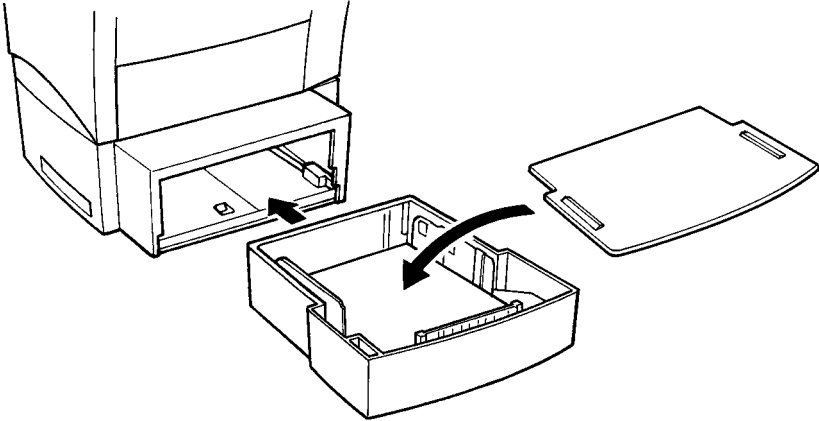
The second paper cassette unit consists of a base unit and a 500-sheet capacity paper cassette. There are a total of five different paper cassettes available, each of which supports feeding of a specific paper size: A4, B5, Letter, Legal or Executive. The A4 size tray comes with the printer. If you want to feed another paper size using the second paper cassette unit, contact your dealer about purchasing the tray that supports the paper size you want to use.

Installing the Second Paper Cassette Unit

- 1 Remove the second paper cassette unit and Tray 2 from their packaging, including the protective tape used to hold the various components in place.
- 2 Place the printer on top of the base unit. Make sure to align the coupling pins of the base unit with the holes located underneath the printer.

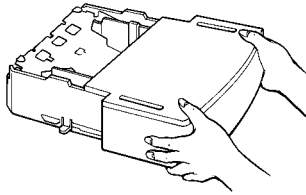


- 3 Load paper onto Tray 2 (see page 3-5 for details).
- 4 Insert Tray 2 into the second paper cassette unit.



Note

- Be sure to use both hands whenever Tray 2 is removed from or inserted into the second paper cassette unit.



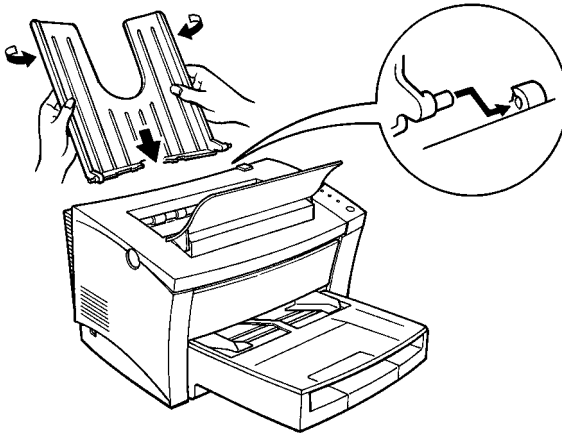
Face-Up Tray

This optional face-up tray receives printed pages, printed side up, as they are output from the printer. Printed pages are not rolled during the printer's output sequence when this tray is used. For this reason, the optional face-up tray is recommended for thick paper or envelopes to avoid curling during the feeding process.

The maximum capacity of the optional face-up tray is 20 sheets.

Installing the Face-Up Tray

- 1 Remove the face-up tray from its carton as well as its protective plastic bag.
- 2 Gently bend the output tray inwards, toward the printer, with both hands. Align the insertion pins of the tray with the pin holders of the printer (see illustration).



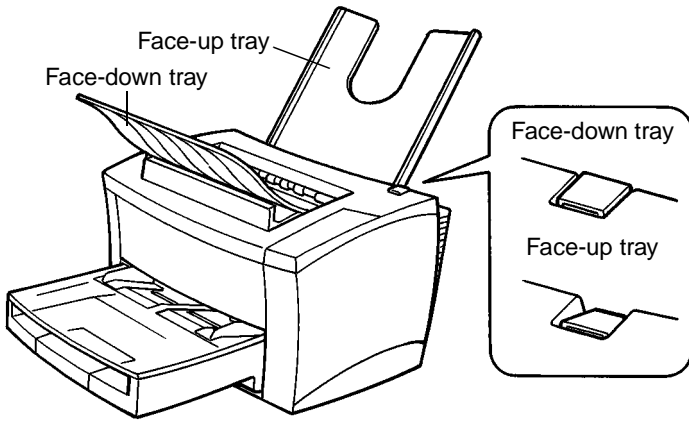
Selecting output direction (printed-side up or down)

The face-up tray, as explained earlier in this section is a useful tool for printing on thick paper or envelopes printed-side up. The factory default for the output tray however, is the face-down tray (printed-side down).

Options

This setting is controlled by a switch which is located on the right side of the printer toward the rear (see illustration).

- 1 When the switch is flush with the top of the printer, prints are output printed-side down (factory default).
- 2 When the switch is pressed in, prints are output printed-side up.



Note

- Do not use the switch to change the setting while the printer is operating.

SIMM (Single In-line Memory Module)

This printer comes with 2MB of memory as standard. You can increase memory capacity to up to 18MB by installing an optional 4, 8, or 16MB optional SIMM.

Important!

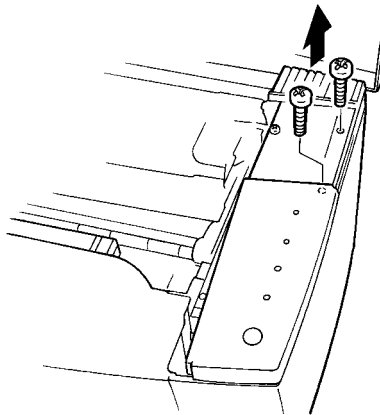
- Use of 8MB or 32MB SIMMs is not recommended, because the printer is able to use only half the memory on these SIMMs. Installation of these SIMMs in your printer will show as 4MB or 16MB, respectively.

Installing the optional SIMM

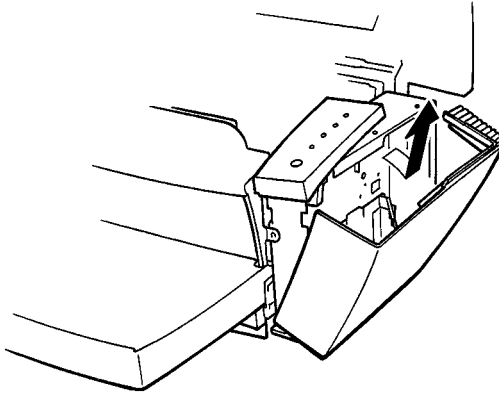
Warning

- Electric shock hazard! Do not remove any cover of the printer that is not directly specified for removal in the User's Manual.

- 1 Turn off the printer and unplug the power cord.
- 2 Disconnect the parallel cable from the printer
- 3 Press the cover release button and open the top cover.
- 4 Remove the two screws that hold the side cover of the printer in place with a screwdriver.



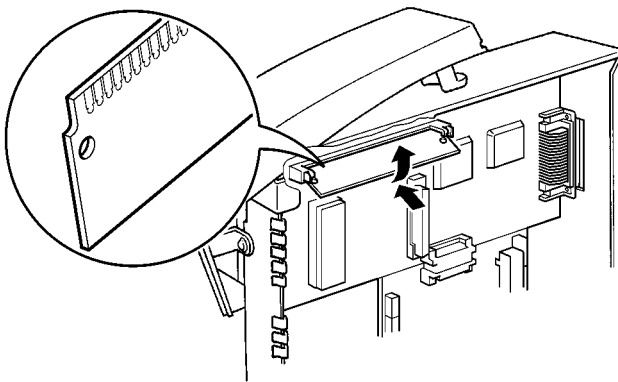
5 Remove the side cover.



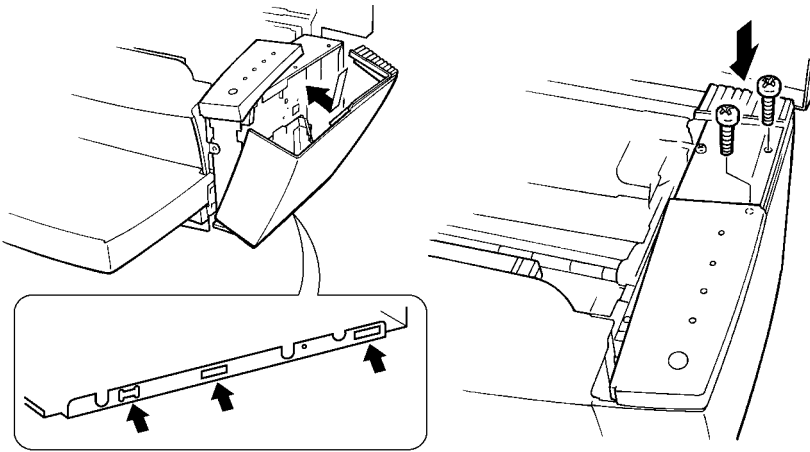
Caution

- Do not touch any part of the main circuit inside the printer with your hands.

6 Being careful not to touch the connection points along the edge of the SIMM, insert the board into the socket on the main circuit. Apply pressure until the SIMM locks into place.

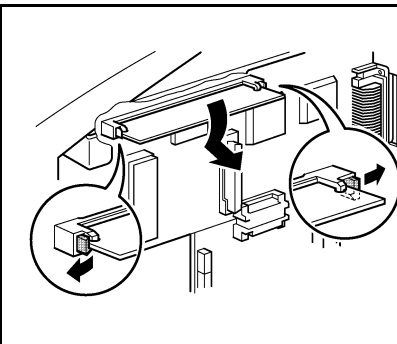


- 7 Replace the side cover using the two screws provided to secure it in place.



- 8 Print a self-test page (page 2-13) and check to confirm that the installed memory item correctly shows the increase in memory capacity. If it doesn't, repeat the above steps making sure that the SIMM is installed correctly.

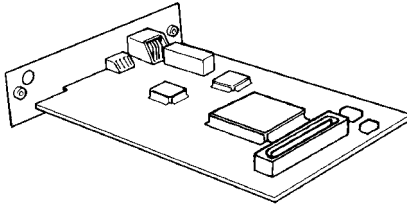
Note



- To remove the SIMM from the main circuit, press down on the metal taps on each side of the socket to release the SIMM.
- Once the SIMM has been installed, be sure to confirm that the printer memory setting now shows the new memory capacity. For more information, see page 4-20.

Network Interface Card (NIC)

The network interface card is equipped with a 10BASE-T interface connector for connection to the network server. For details, see the Network Interface Card User's Manual.



Important!

- The NIC 401W is the only network card that is compatible with the PagePro 8L.

Chapter

Using the Printer

3

Printing Paper

Caution

- This printer is designed to print on only the following types of paper.

Type

Paper Feeding Port	Plain Paper weighing: 60 to 90 g/m ² 16 to 24 lbs.	Special Paper						
		Recycled Paper weighing: 60 to 90 g/m ² 16 to 24 lbs.	Transparency Sheet	Labels	Letter-head	Envelopes	J-Post (Post-card) size: 100 × 148 mm 4" × 5-3/4"	Thick Paper* weighing: 90 to 163 g/m ² 24 to 43 lbs.
Tray 1	○	○	○	○	○	○	○	○
Tray 2	○	○	○	None	None	None	None	None

* Does not support Legal L size thick paper.

L: Lengthwise

Size

Standard size

Paper Feeding Port	A4 210 × 297 mm 8-1/4" × 11-3/4"	JIS B5 182 × 257 mm 7-1/4" × 510"	Legal* 216 × 356 mm 8-1/2" × 514"	Letter 216 × 279 mm 8-1/2" × 511"	Executive 184 × 267 mm 7-1/4" × 10-1/2"
Tray 1	○	○	○	○	○
Tray 2**	○	○	○	○	○

* Does not support Legal L size thick paper

L: Lengthwise

** Each of the five cassettes of Tray2 support one of the five types of paper that are compatible with this printer.

Non-standard size (Tray 1 and Manual Feed Tray only)

This printer also supports the following sizes of paper;
 Invoice, DL Envelope, C5 Envelope, B5 Envelope, Com10 Envelope,
 Monarch Envelope, Hagaki

Loading Paper

There are three sources that can be used to feed paper into the printer: Tray 1, the manual feed tray, and the optional Tray 2.

Tray 1 is the standard source for supplying paper to the printer. Various types and sizes of paper can be fed from this tray.

You can also add an optional Tray 2 as a secondary paper source. See the section of this *User's Manual* entitled "Options" for details on using this tray unit.

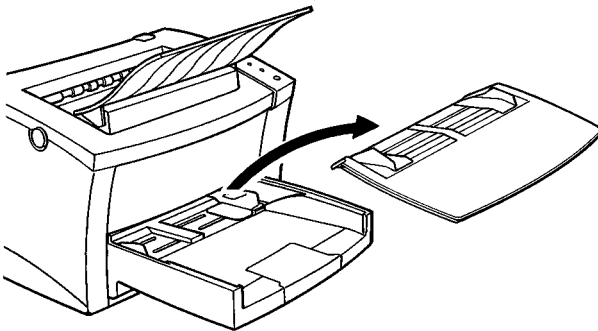
When you change the paper size, be sure to specify the paper size setting in the printer driver properties dialog box.

Always remember that paper storage conditions greatly affect print quality. Store paper in its original package. Keep paper out of areas subject to extreme temperatures or humidity.

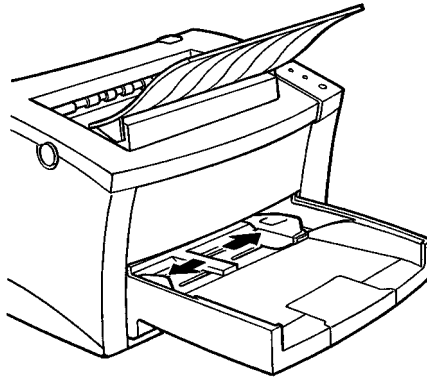
Loading Paper onto Tray 1

You can load up to 150 sheets of standard paper onto Tray 1. See page 3-1 for details on paper sizes and types.

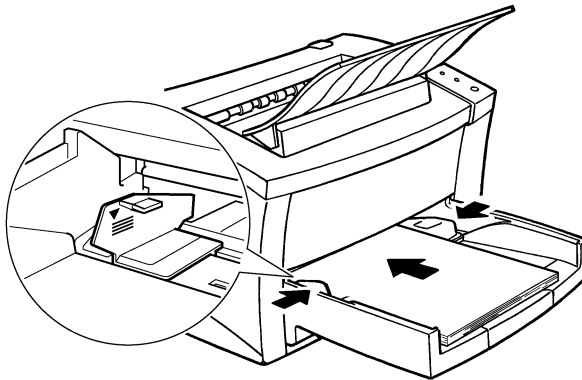
- 1** Remove the tray cover from Tray 1.



- 2 Open the paper size guides.



- 3 Place a stack of paper in the center of Tray 1. Adjust the paper size guides so that both the left and the right sides of the paper stack are secure.

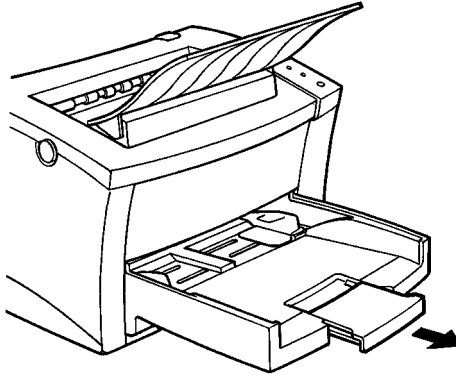


Note

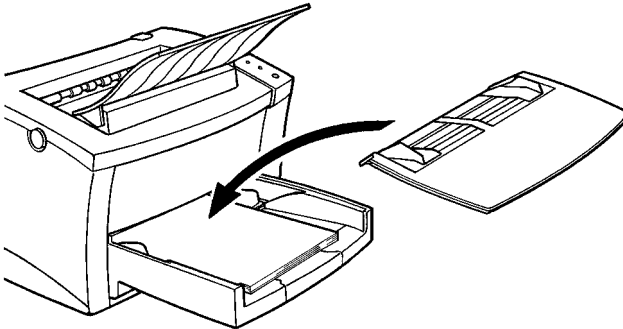
- A maximum level mark on the paper size guide shows how high you can stack paper on Tray 1. Make sure that paper is stacked no higher than this mark.

Note

- Do not load additional paper until the paper currently loaded onto Tray1 is completely used.
- Never load paper while the printer is performing a reset operation (page 1-6).
- Pull out the paper support in Tray 1 when printing on Legal size paper.



4 Replace the tray cover to Tray 1.

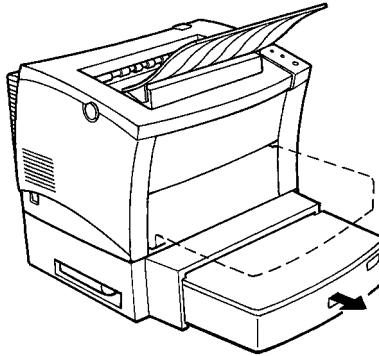


Loading Paper onto Tray 2

Note

- Make sure that the Tray 2 cassette for the proper size of paper to be used for printing has been installed into the second paper cassette unit. For instructions on inserting (and removing) Tray 2 into (and from) the second paper cassette unit, refer to Chapter 2.

- 1 Slide Tray 2 out of the second paper cassette unit as illustrated.

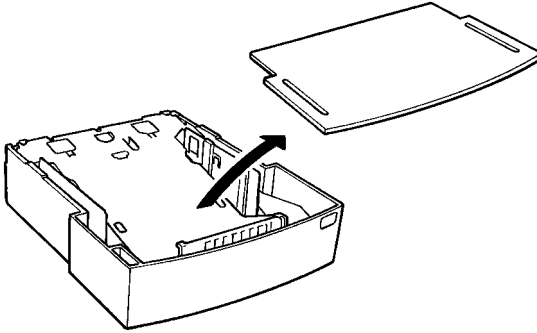


Note

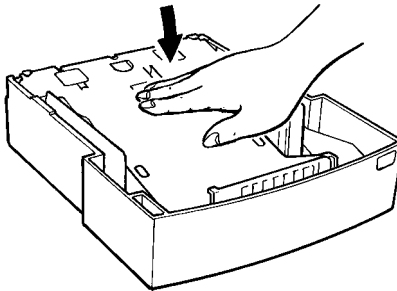
- The cassette is designed to remain in the unit during the normal loading and operation of the printer. To remove Tray 2 from the unit, pull it out as far as it will go without force. Then gently raise the forward-end up, and remove Tray 2 from the unit.

Loading Paper

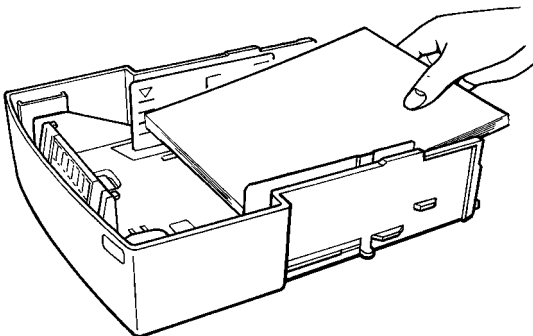
- 2 Remove the cover of the cassette from Tray 2.



- 3 Press down on the paper lifting plate located inside of Tray 2 until it locks.

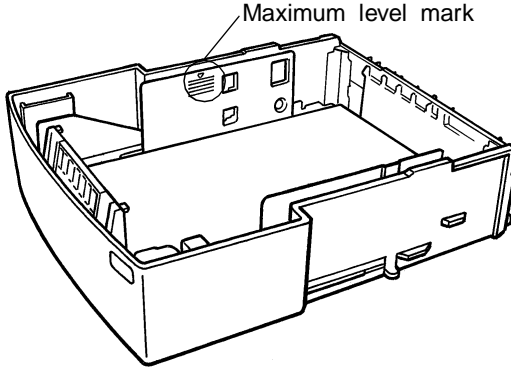


- 4 Place a stack of up to 500 sheets of paper into Tray 2 so the side that was facing up when the paper was unwrapped is still facing up.



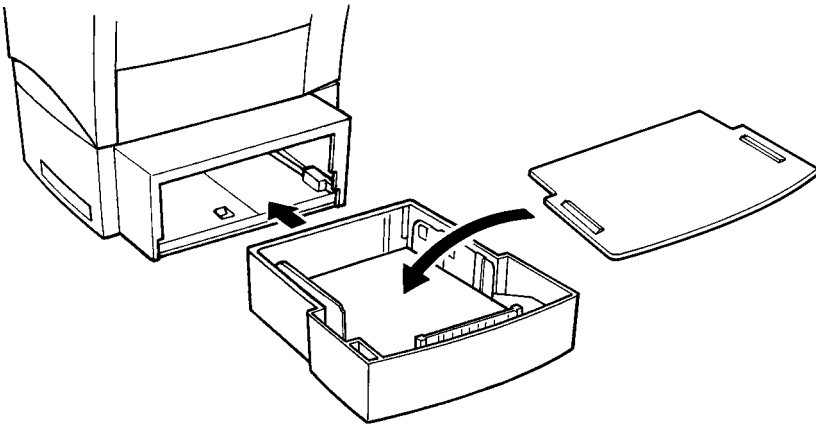
Note

- A maximum level mark inside the inlet of Tray 2 shows how high you can stack paper on Tray 2. Make sure that paper is stacked no higher than this mark.



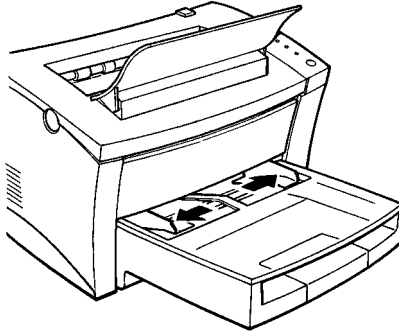
- Do not load additional paper until all the paper currently in Tray 2 is completely used up.

5 Replace the cassette cover and insert Tray 2 into the second paper cassette unit.

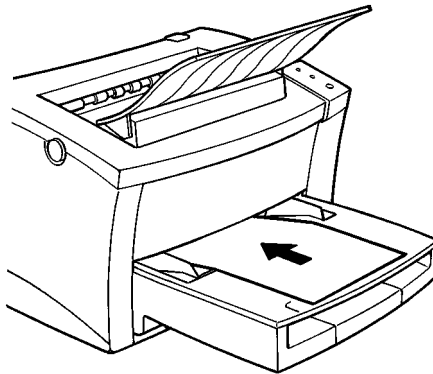


Manual Paper Feed

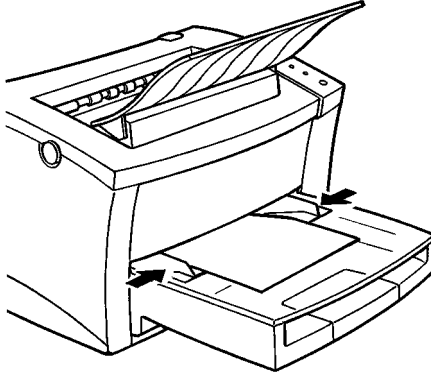
- 1 Make sure that the tray cover is properly attached to Tray 1.
- 2 Open the paper size guides.



- 3 Insert the sheet of paper into the manual feed tray with the side to be printed facing up.



- 4 Adjust the paper size guides so that both sides of the paper are secure.



Note

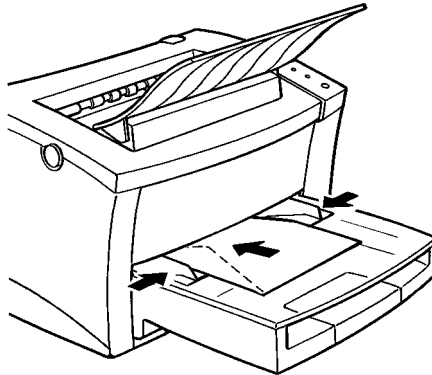
- Insert only one sheet of paper or one envelope at a time when feeding manually.

Printing on Envelopes

The manual feed tray supports Com 10, Monarch, DL, C5, and B5 envelopes and Hagaki postcards.

Manually feed envelopes one by one into the manual feed tray.

- 1 Place the envelope with the side to be printed facing up on the tray. The flap of the envelope should be facing down and to the left.
- 2 Make sure that the envelope is placed in the center of the tray and is secured by the paper size guides.



Note

- Because there is great variation in the quality of paper used for envelopes, we suggest that you produce test prints of various types before purchasing any envelope in quantity for use with this printer.

Note the following points whenever printing on envelopes.

- Make sure that all edges are creased sharply and that all flaps are folded correctly.
- Do not use envelopes that are self-adhesive. Use only envelopes that have standard sealing that sticks after it is moistened.

- Use envelopes whose flaps run the entire length of the envelope. Envelopes that seal at one end will not feed properly.
- Do not use envelopes that have a window. Such envelopes can seriously damage the printer.
- Do not use envelopes that are wrinkled.
- Never use envelopes that have clasps or any other type of fastener that can damage the printer.
- Do not store envelopes in an area that is subject to high humidity.

Chapter

Printer Driver

4

Important!

- The printer driver for your PagePro 8L is located on the CD-ROM that comes with your printer. If your computer is not equipped with a CD-ROM drive, refer to page 4-39 which explains how to copy the printer driver from the CD-ROM to a floppy diskette, or contact your local MINOLTA-partner (see pages 10 and 11 in chapter General Information).

For Middle East and African countries only

- If you do not have a CD-ROM drive, or you do not have the possibility to utilise a CD-ROM drive at all, please refer to the Internet Homepage of Minolta <http://www.service.minolta.de>, or contact your local distributor/dealer to get your dedicated printer driver.

Introduction

The PagePro 8L uses Adobe PrintGear technology. PrintGear gives you;

- High speed performance
- Easy to use networking
- Special features like watermark printing, booklet printing, poster or N-up printing and 2-sided printing.
- Windows Status Monitor — Displays simultaneous printer status information as well as reports the progress of the current print job.

System Requirements

The following describes the minimum system requirements for running the Minolta PagePro 8L printer driver.

Operating System: Microsoft Windows 95, Windows 3.1x, Windows NT4.0 or MS-DOS

Personal Computer: IBM-compatible PC with at least an 486DX 16MHz CPU (Pentium processor recommended)

1.44MB 3.5-inch floppy disk drive

CD-ROM drive

I/O Interface: Standard PC parallel printer port and cable

Memory: At least 8MB PC RAM

Free Disk Space: Approximately 20MB for files

Note

- | |
|---|
| <ul style="list-style-type: none">• Use of a poor quality parallel cable may adversely affect printing. |
|---|

Installing PagePro 8L Printer Driver Under Windows 95

This section provides information on installing PagePro 8L Printer Driver under Windows 95. It also tells you how to uninstall the PagePro 8L Printer Driver when necessary.

Installing PagePro 8L Printer Driver

- 1 Turn on your computer and start up Windows 95.
- 2 Insert the **Minolta PagePro Installer** CD-ROM into your computer's CD-ROM drive. The startup window of the CD-ROM automatically appears on your computer screen.

Note

- The configuration of some computers may prevent the above screen from appearing automatically. If the screen does not appear, double-click **pagepro.exe** from the CD-ROM.

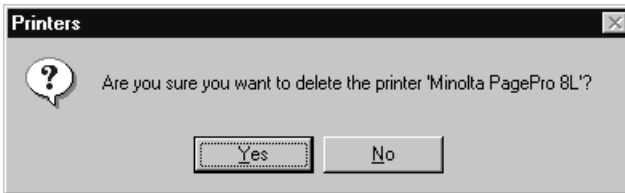
- 3 Follow the instructions that appear on your computer screen to complete the installation.
- 4 During installation you are asked for location of the printer driver. Type in following path (in this example, we assume that **D:** is the name of the CD-ROM drive):
D:\drivers\pp8l\win95\gb\pg\drv

To uninstall the PagePro 8L Printer Driver

- 1 Click the **Start** button, point to **Settings**, and then click **Printers**.
- 2 Select the **Minolta PagePro 8L** printer icon, and select **Delete** from the **File** menu.

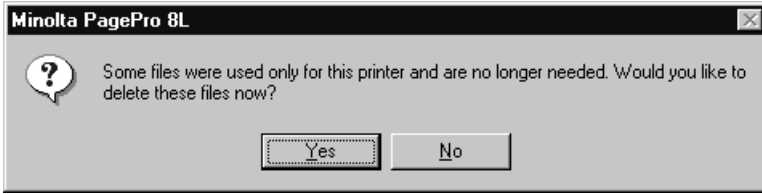


- 3 In response to the warning dialog that appears, click **Yes** to proceed with the uninstall operation or **No** to abort.



Installing PagePro 8L Printer Driver Under Windows 95

4 Click **Yes**.



This completes the uninstall procedure for the PagePro 8L printer driver.

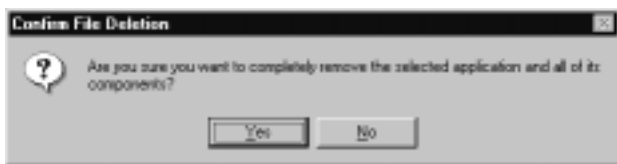
5 Click the **Start** button, point to **Settings**, and then click **Control Panel**.

6 Double-click **Add/Remove Programs** to open the Add/Remove Programs Properties.

7 Select **Minolta PagePro 8L** from the list and click **Add/Remove**.



- 8 In response to the warning dialog that appears, click **Yes** to proceed with the uninstall operation or **No** to abort.



This completes the uninstall procedure for the Windows Status Monitor and/or DOS Utility.

Installing PagePro 8L Printer Driver Under Windows 3.1

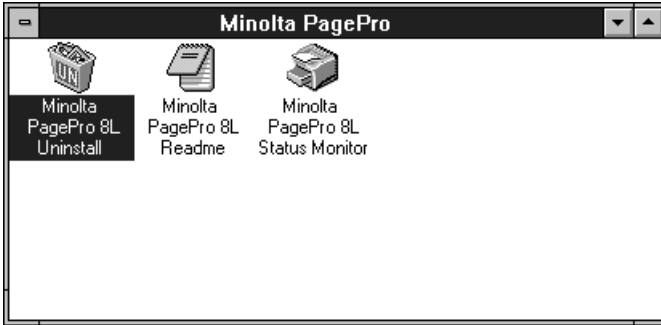
This section provides information on installing PagePro 8L Printer Driver under Windows 3.1. It also tells you how to uninstall PagePro 8L Printer Driver when necessary.

Installing PagePro 8L Printer Driver

- 1** Turn on your computer and start up Windows 3.1.
- 2** Double-click the **File Manager** icon, which is located in the **Main** group within the **Program Manager**.
- 3** Insert the **Minolta PagePro Installer** CD-ROM into your computer's CD-ROM drive.
- 4** Use **File Manager** to display the contents of the CD-ROM.
- 5** For this example, we assume that the CD-ROM is located in drive D:. Double-click D:\drivers\pp8l\Win311\gb\pg\drv**setup.exe**.
- 6** Follow the instructions that appear on your computer screen and select the type of installation you want.

To uninstall the PagePro 8L Printer Driver

- 1 Double-click the **Minolta PagePro 8L Uninstall** icon of the **Minolta PagePro** dialog box.



- 2 In response to the warning dialog that appears, click **Yes** to proceed with the uninstall operation or **No** to abort.



This completes the uninstall procedure for the PagePro 8L printer driver, Windows Status Monitor and/or DOS Utility.

Using the Minolta PagePro 8L Printer Driver

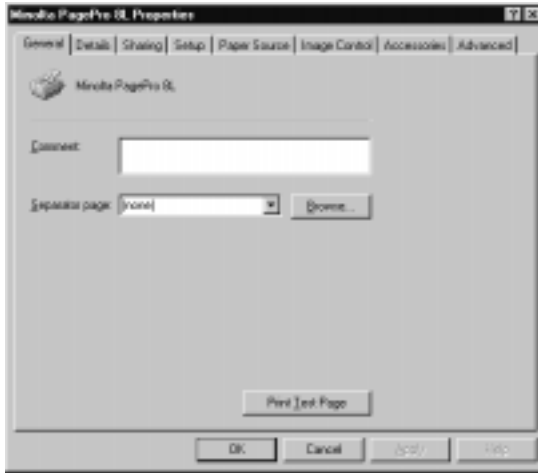
The Minolta PagePro 8L printer driver lets you control a number of printer parameters from your computer. The following describes how to use the printer driver under Windows 95 and Windows 3.1, and provides brief explanations on the settings you can make. See the printer driver's online help for full details about each setting.

Starting Up the Printer Driver in Windows 95

- 1 Click **Start**, point to **Settings**, and then click **Printers**.
- 2 Click the **Minolta PagePro 8L** icon to select it. On the **File** menu, click **Properties** to display Minolta PagePro 8L Properties.



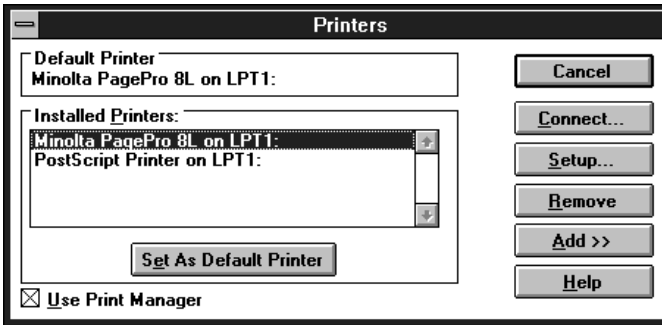
Driver settings are grouped in tabs. To work with a particular group of settings, click on the appropriate tab at the top of the dialog.



For help on a group of settings, click the **Help** button at the bottom of the dialog.

Starting Up the Printer Driver in Windows 3.1

- 1 Double-click the **Control Panel** icon, which is located in the **Main** group within the **Program Manager**.
- 2 Double-click **Printers** to display the Printers dialog box.
- 3 Select **Minolta PagePro 8L** from the Installed Printers menu and click **Setup...**



Driver settings are grouped in tabs. To work with a particular group of settings, click on the appropriate tab at the top of the dialog.



For help on a group of settings, click the **Help** button at the bottom of the tab.

Settings

The following shows the contents of each tab and provides a brief explanation for each setting available.

Common Buttons

Help

Click to view online help.

Cancel

Click to exit the dialog, discarding any changes made.

OK

Click to exit the dialog, saving any changes made.

Note

- The **General**, **Details** and **Sharing** menus are features of Windows 95. For information on these tabs, see your Windows user's guide. The **Sharing** tab is available only when the printer is shared in a network environment.

Setup Tab



Copies

Use this box to specify how many uncollated copies to print. This setting may be overridden by the copies setting in some Windows programs.

Resolution

Set the maximum resolution, as measured in dots per inch. Higher resolutions produce the best quality output, but take longer to print.

Orientation

Choose **Portrait** or **Landscape** to select the default orientation of the printed page.

Toner Usage

With “Save Toner”, text and graphics print gray rather than black.

Special Effects

The special effects buttons display dialogs for the following settings: **Watermark Options** (page 4-16), **2-Sided Printing** (page 4-16), **Layout Options** (page 4-17), **Booklet Printing** (page 4-18).

Summary Area

The image in this area, as well as the summary text below, changes to reflect current settings.

Restore Defaults

Click to return most printer driver values to their default values. Settings not affected by the **Restore Defaults** button are: changes to watermarks, accessories that have been installed, and settings in the Printer Administration dialog.

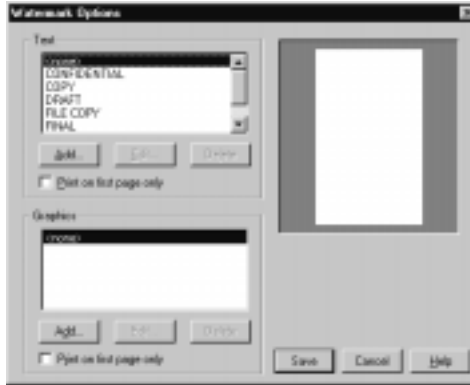
About

Click to view copyright and version information.

Special Effects Dialogs

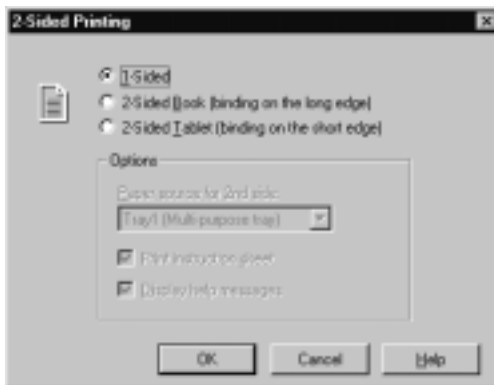
The following dialogs appear by clicking the special effects buttons on the Setup tab.

Watermark Options



This dialog allows you to add text and/or graphic watermarks to the printed page.

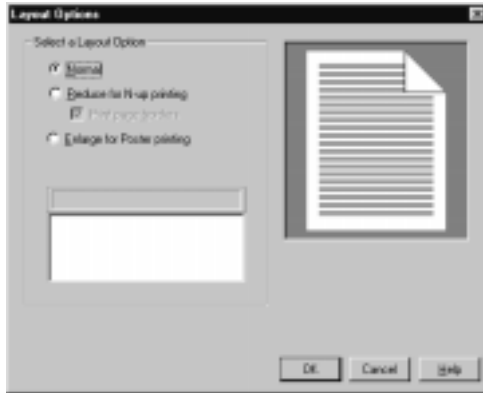
2-Sided Printing



This dialog allows you to turn on 2-sided printing and choose the “**Binding method**” that will be used to layout the pages for 2-sided print jobs.

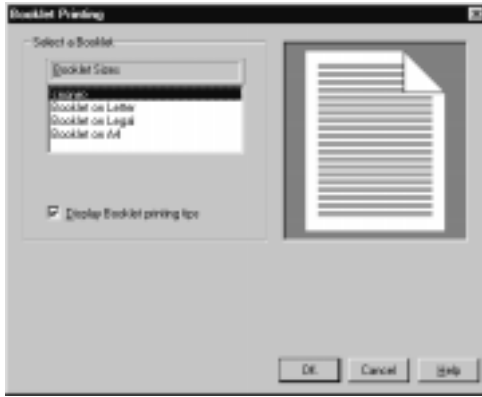
When printing on the back of a document, turn the front surface of the document so that it faces down and reload it into the printer. Print out the instruction sheet that is available through this dialog for more information.

Layout Options



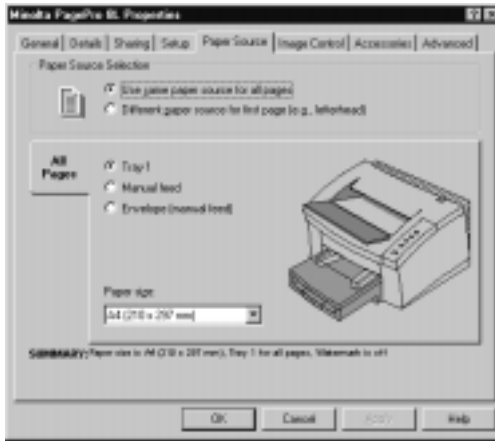
From this dialog you can enable **N-up** or **Poster** printing.

Booklet Printing



This dialog allows you to turn on booklet printing and select a particular size paper on which to print.

Paper Source Tab



Paper Source Selection

This setting allows you to specify whether or not the same paper will be used for all the pages of a document. You can use a different paper source for the first page only of a document.

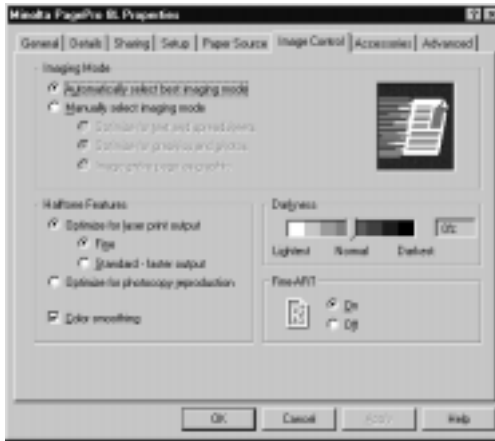
All Pages/First Page Source/Other Pages

Change the setting by clicking one of the radio buttons next to the source names.

Paper size

Choose the paper size you wish to use from the drop-down list. Paper sizes shown are determined by the currently chosen paper source.

Image Control Tab



Automatically select best imaging mode

This option automatically selects from among the imaging modes described below.

Manually select imaging mode

Choose “**Optimize for text and spreadsheets**” for fastest printing of spreadsheets or documents with lots of text.

Choose “**Optimize for graphics and photos**” to ensure that documents with graphic images print at their best quality.

Choose “**Image entire page as graphic**” for the best match between the onscreen and printed image.

Halftone Features

Choosing “**Optimize for laser print output**” improves the quality of graphics printing. “**Fine**” uses 16-bit gray patterns while “**Standard - faster output**” uses 8-bit patterns.

Choosing “**Optimize for photocopy reproduction**” uses a circular half-tone dot method for reproducing grays.

The “**Color smoothing**” option substitutes gray for colors that are represented on-screen by a mix of two different color pixels.

Darkness

Move the slider to lighten or darken grays in graphic images.

Fine-ART

Detects and smoothes jagged edges of characters and diagonal lines.

Accessories Tab



Hardware

If you have installed an option on your printer, you can add it to the driver by selecting it in the top list and clicking the **Add** button. To remove an option from the bottom list, select it and click **Remove**.

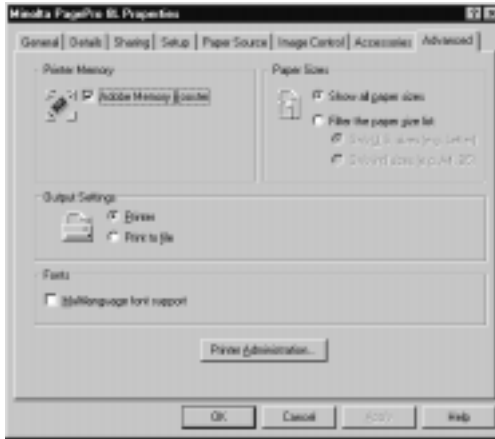
Printer Memory

If your printer is connected using a printer sharing device or on a network, you may need to set the amount of memory that has been added to the printer yourself. The driver will automatically detect the memory if the printer is connected directly to the computer.

Important!

- Use of 8MB or 32MB SIMMs is not recommended for this printer because the printer is able to use only half the memory on these SIMMs. If these SIMMs are installed in your printer, they will show as 4MB or 16MB, respectively.

Advanced Tab



Printer Memory

Adobe Memory Booster Technology ensures that pages will print even if they are very complex or use a lot of printer memory. In very rare cases, a page will be too complex to simplify, and will not print even with Adobe Memory Booster turned on. In this case, try printing with the **Imaging Mode** set to **Optimize for Graphics and Photos** or **Image Entire Page as Graphics**.

Paper Sizes

Choose which paper sizes will be shown in the Paper Source tab. Choose **Show all paper sizes** if you want all paper sizes shown (the default).

Multilanguage font support (Windows 95 only)

Select Multilanguage font support for proper printing of a character set which contains more than 256 characters.

Printer Administration

Click this button to display the **Printer Administration** dialog shown below.



Auto-continue

When auto-continue is on, the printer automatically resumes printing after most errors. When it is off, the printer waits for you to press the printer button on the front of the printer before it resumes printing.

Jam recovery

When jam recovery is on, the printer reserves part of its memory so it can reprint a page if there is a printer jam.

Wait timeout

For Windows jobs, this setting determines how long the printer will wait for data before ejecting a partially printed page. For PCL jobs, this setting determines how long the printer will wait for a job to end before accepting data from another source.

Manual Feed/Duplex Timeout

This setting determines how long the printer will wait for you to provide paper when **manual feed** is selected, or how long it will wait for you to insert pages for the second pass of a 2-sided (duplex) print job.

Energy Saving

Click on **Enable Energy Saving** to set your printer to power down after a specified time of inactivity. You can adjust the number of minutes before the printer powers down by typing in a new number in the minutes field.

DOS Printing Utilities

Installing the Printer Software Under DOS

Use the following procedure to install DOS Printing Utilities.

The following procedure is for the installation of the printer software on a PC that is operating exclusively under a DOS operating system and cannot use the standard installation procedure.

- 1 Connect your printer to the parallel port of your PC.
- 2 Turn on your computer and start up DOS.
- 3 Turn on your printer and make sure it is online.
- 4 Insert the **Minolta PagePro Installer** CD-ROM into your computer's CD-ROM drive.
- 5 From the DOS prompt, create a directory on your hard drive for the DOS software. For example, the following creates a directory named `\mltdos` on drive C:
Type: `md c:\mltdos`
- 6 Change to the directory you created in the above step.
Type: `cd c:\mltdos`
- 7 Copy the Minolta PagePro 8L DOS Printing Utility program files from the **Minolta PagePro Installer** CD-ROM.
(This example assumes that your CD-ROM is drive D.)
Type: `copy d:\drivers\pp8l\dos\mpg8cp.exe`
`copy d:\drivers\pp8l\dos\mpg8sm.exe`
`copy d:\drivers\pp8l\dos\mpg8cp.hlp`

The printer control and monitoring features of this DOS application are contained in two separate programs, the **DOS Control Panel** and the **DOS Status Monitor**. These programs work seamlessly with each other as well as with the PagePro 8L Windows Status Monitor. However, the Windows Status Monitor will override the DOS Status Monitor when a document is printed from a DOS application within Windows.

Accessing the DOS Control Panel

This section explains how to access the Printer Control Panel.

To access the Printer Control Panel

Type the following at the DOS prompt to access the Printer Control Panel:

- 1 Change to the directory you created under “Installing Printer Software Under DOS” on page 4-26.

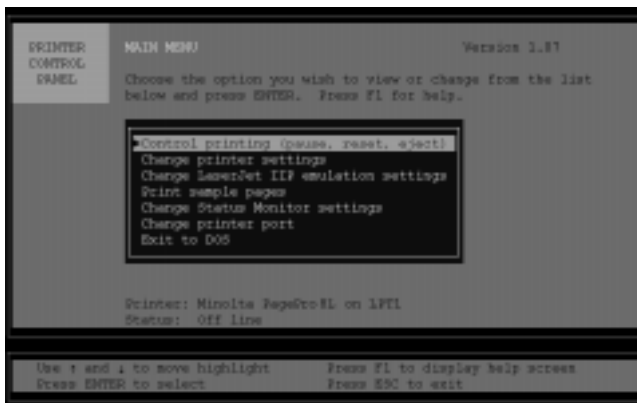
Type: `cd c:\mldos`↵

- If you used the directory name we showed in our installation example, type in the command exactly as shown above. If you used a different directory name, change `mldos` to the name you used.

- 2 Type the following command at the DOS prompt.

Type: `mpg8cp`↵

After the Printer Control Panel finishes reading the printer profile, the MAIN MENU window appears.



See the next section for details on getting around in the **Printer Control Panel** windows.

To exit the Printer Control Panel

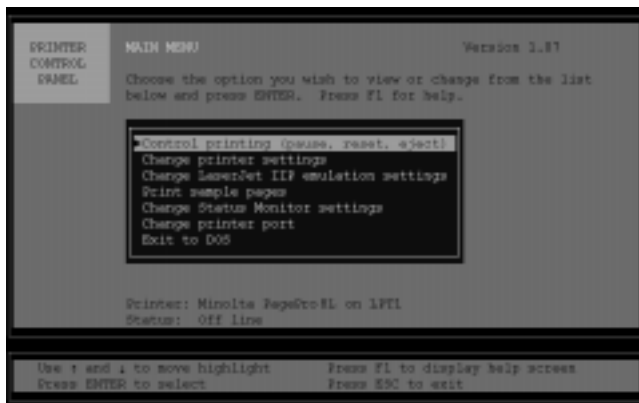
Select **Exit to DOS** from the **MAIN MENU**, or press **Esc**.

Using the DOS Control Panel

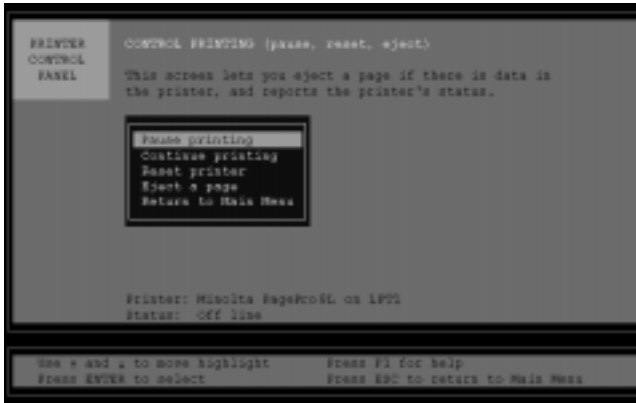
The following settings can only be changed through the **DOS Control Panel**: **default font**, **default symbol set**, **lines per page**, **horizontal offset** and **vertical offset**.

MAIN MENU

The **MAIN MENU** appears after running the **DOS Control Panel** program. To select any item from this menu, use the arrow keys on the keyboard to move the highlight up or down until the desired item is highlighted, then press **Enter**. The items on this menu include:



Control Printing (pause, reset, eject)



Eject a page

The **Eject a page** feature allows you to generate a page whenever there is data left in the printer.

Pause Printing

Prevents the printer from receiving data but continues printing jobs that have already reached the printer.

Continue Printing

Causes the printer to begin printing again once it has been paused.

Reset Printer

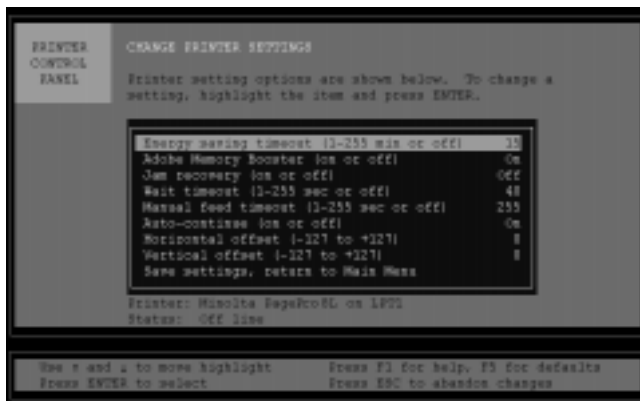
Selecting this option sends a reset command to the printer. This cancels all jobs in process in the printer.

Return to MAIN MENU

The **Return to MAIN MENU** item allows you to return to the previous MAIN MENU screen.

Change Printer Settings

The default settings for the items on this menu should be satisfactory for most printing applications.



Energy saving timeout

This timer setting specifies how long the printer will stand without receiving data before it enters an energy saving “sleep” mode. The default for this feature is 15 minutes, but it can be set for between 1 to 255 minutes. When the printer is in the energy save mode, the On Line panel indicator will flash slowly. When the On Line button is pushed or if a print job is sent to the Printer, the Printer will “wake” from the Energy Saving mode.

Adobe Memory Booster

Adobe Memory Booster helps to ensure that pages will print even when they are very complex or take large amounts of printer memory. The default setting for this feature is ON.

Jam recovery

This feature acts as a backup system by reserving a portion of the printer's memory for reprints in the event that a **paper misfeed** or **Jam** should occur. Enabling this feature may cause a noticeable decrease in printing speed. The default setting for this feature is OFF.

Wait timeout

Specifies how long the printer will wait for a document to be downloaded from the computer before ejecting the page that is currently being printed.

Manual feed timeout

This setting determines how long the printer will wait for paper to be loaded into the printer when manual feed has been selected. The default setting for this feature is off. If paper is not manually fed into the printer during the allotted period of time, the printer will automatically print the document using paper from an available paper tray.

Auto-continue

When enabled, the printer will automatically resume printing after a recoverable error has occurred. If this setting is not selected, the control panel button must be pressed before printing will resume after a recoverable error. The default setting is ON.

Horizontal offset

This setting adjusts the left and right placement of the document on the printed page. Negative adjustments set the left placement while positive adjustments set the right placement in three-hundredth of an inch increments. Values can be set from between -127 to +127. The default value is 0 (zero).

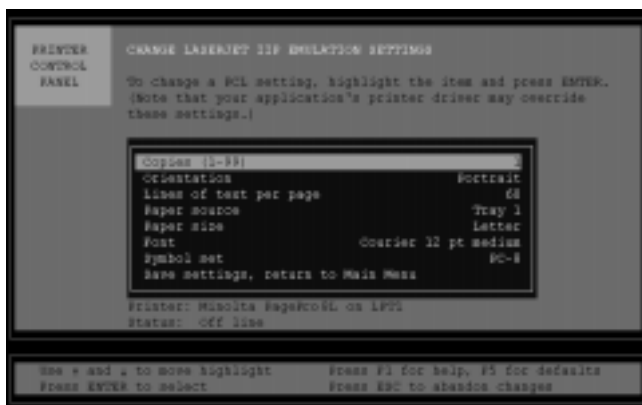
Vertical offset

This setting adjusts the top and bottom placement of the document on the printed page. Negative adjustments set the top placement while positive adjustments set the bottom placement in three-hundredth of an inch increments. Values can be set from between -127 to +127. The default value is 0 (zero).

Save settings, return to MAIN MENU

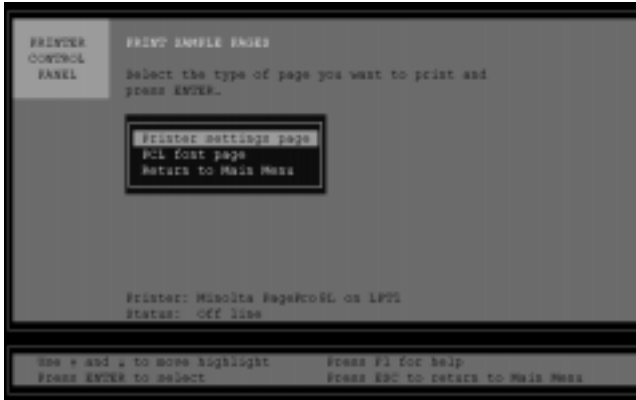
Select this item to save the current settings and return to the MAIN MENU. Press **F5** to restore all settings to their default values or press the **Esc** button to return to the MAIN MENU without saving any changes that might have been made.

Change LaserJet IIP Emulation Settings



LaserJet IIP Emulation is automatically used whenever a document is printed from a DOS application. This menu allows you to select a number of functions that affect printing screens, copying text files to the printer, etc.

Print Sample Pages



Two test pages can be printed from this item.

Printer settings page

The internal test page: printer model, version, installed memory, etc.

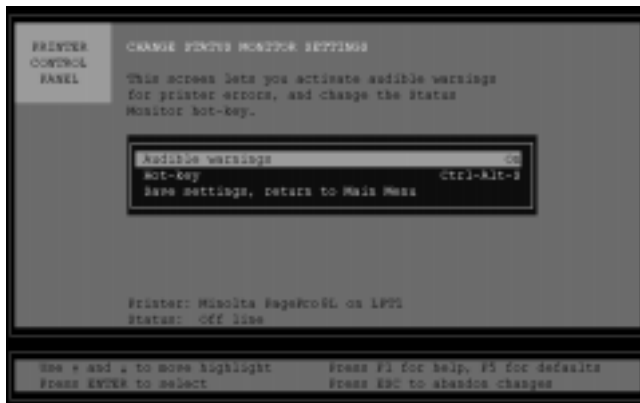
PCL font page

The internal font test page: print samples of internal fonts (Courier 12pt., medium, italic, bold; Courier 10pt., medium, italic, bold and Line printer 8.5 pt).

Return to MAIN MENU

Select this item to return to the MAIN MENU.

Change Status Monitor Settings



Audible warnings

This menu allows you to turn on or off audible printer problem warnings. The default setting for audible warnings is ON.

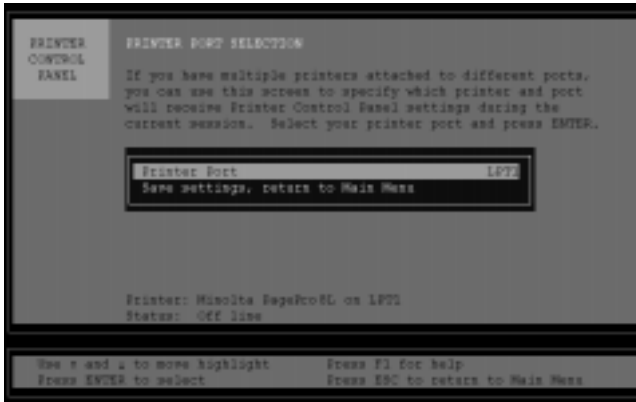
Hot-key

The DOS Hot key is a keyboard shortcut used to pop-up the DOS Status Monitor. The **hot key** can be custom programmed using the **Alt** key, **Ctrl** key, **left shift** key, **right shift** key or any other letter or number. The default hot key combination is the **Ctrl** key + **Alt** key + **S**.

Save settings, return to MAIN MENU

Select this item to save the current settings and return to the MAIN MENU. Press **F5** to restore all settings to their default values or press the **Esc** button to return to the MAIN MENU without saving any changes that might have been made.

Change Printer Port



If multiple printers are connected to the computer, this menu will allow you to specify which port the PagePro 8L is attached to. The default for this setting is LPT1.

Exit to DOS

This option allows you to return to the DOS prompt.

DOS Status Monitor

This feature provides real-time information about the status of your printer. If the printer is connected to the computer over a network however, the information available through the DOS Status Monitor is limited to only “paper error” and “off line”.

To install the DOS Status Monitor, refer to the previous section titled “Installing Printer Software Under DOS”.

To launch the DOS Status Monitor, follow the instructions below:

Go to the directory in which the DOS Status Monitor is installed.

Load the DOS Status Monitor into the computer’s memory by typing: MPG8SM. Press **Enter**.

Launch the DOS Status Monitor by pressing its **hot key**. The default Hot-key combination is **Ctrl + Alt + S**.

Note: it may not be possible to launch the DOS Status Monitor if the currently running DOS program is displaying a graphic screen.

Auto Loading the DOS Status Monitor

To program your system to automatically launch the DOS Status Monitor every time you turn the computer ON, enter the following line into the AUTOEXEC.BAT file:

```
C:\windows\MPG8SM.EXE
```

(or to the directory that contains the MPG8SM.EXE file).

Using the DOS Status Monitor

Launch the DOS Status Monitor by pressing the **hot key** (the default hot key combination is the **Ctrl** key + **Alt** key + **S**). Various information about your printer is displayed. If the printer is connected to the computer over a network however, the information available through the DOS Status Monitor is limited to only “paper error” and “off line”.

Pause Printing/Continue Printing

Press **(P) Pause Printing** to temporarily prevent the printer from receiving input. All documents that had been sent to the printer prior to enabling the **pause printing** setting will be output, however new documents cannot be printed until **Continue printing (C)** is pressed.

Resetting the Printer

Pressing **(R)** cancels all jobs that are currently in process. Additionally, any fonts that have been downloaded to the printer will be cleared.

Eject a Page

Press **(E)** to generate a page whenever there is data left in the printer.

Exit this menu

Press **(X)** or the **Esc** button to exit the DOS Status Monitor.

Removing the Status Monitor

To remove the Status Monitor from the computer's memory, at the DOS prompt,

Type: `mpg8sm /u`

You must be in the directory where the DOS Status Monitor is located when issuing this command.

Windows NT 4.0

For detailed information on Windows NT4.0, refer to the “Printer Driver User’s Manual for Windows NT4.0”.

The driver is located on CD-ROM, for this example we assume that the CD-ROM is located in drive D:, in following folder

D:\drivers\pp8\nt40\gb\pcl\drv

Installation from a Floppy Diskette

If your PC is not equipped with a CD-ROM drive, you can use another computer's CD-ROM drive to copy the printer driver to a floppy diskette using the following procedure.

1. Insert the **Minolta PagePro Installer** CD-ROM into the CD-ROM drive of the other computer, and insert the floppy diskette into the floppy disk drive.
2. The opening screen automatically appears on the screen.

Note

- The configuration of some computers may prevent the above screen from appearing automatically. If the screen does not appear, double-click **pagepro.exe** from the CD-ROM

3. Follow the instructions that appear on your computer screen to copy the driver on floppy diskette.
4. Remove the floppy diskette from the floppy disk drive and insert it into the PC that is not equipped with a CD-ROM drive.
5. Create a folder for the printer driver on the hard disk of the PC. Copy the files that were saved onto the floppy diskette in step 3 to the new folder.
6. After saving the files, find the one that is titled XXXXX.exe (the full name of the file depends upon your operating system). Open this file.
 - This file contains compressed data. The procedure for opening such a file varies according to the operating system of your computer. Consult the user's manual of your operating system for more information regarding compressed files.
7. Through the file that was opened in step 6, install the printer driver by following the instructions provided in this user's manual.

Chapter

Windows Status Monitor

5

Using Windows Status Monitor

The Minolta PagePro 8L Windows Status Monitor puts control of your printer at your fingertips. It allows you to change printer and driver settings quickly and easily, without having to open the Windows Printers folder.

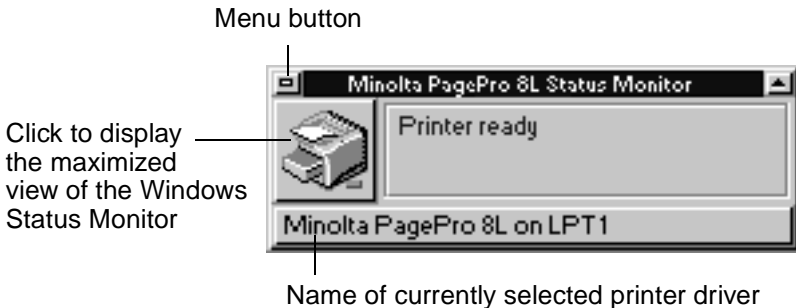
Note

- The following provides general information about the Windows Status Monitor under Windows 95 and Windows 3.1. See the Status Monitor's on-line help for full details.

Displaying the Windows Status Monitor

The Windows Status Monitor is an application that is designed to appear on the desktop whenever you start up Windows 95 or Windows 3.1.

To display the Windows Status Monitor manually, click **Start**, point to **Programs**, point to **Minolta PagePro**, and then click **Minolta PagePro 8L Status Monitor** (Windows 95), or double-click **Minolta PagePro 8L Status Monitor** in the **Minolta PagePro** group (Windows 3.1). This starts up the Windows Status Monitor, which initially appears as a mini-window.



Using the Windows Status Monitor Menu

Click the menu button to display the menu, and then click on the command you want to execute. The following describes each of the available commands.



Maximize

Provides a maximized view of the Status Monitor.

Move

Changes the mouse pointer to a movement tool.

Close

Closes the Windows Status Monitor program.

Change Printer

Displays the list of installed printer drivers.

Printer Setup

Displays the settings dialog for the currently selected printer driver.

Changing the Printer Driver

- 1 Click the currently selected printer driver on the bottom of the Windows Status Monitor mini-window.



Note

- The above list can also be displayed by executing the Change Printer command in the Windows Status Monitor menu.

- 2 Click the name of the printer you want to change to.

Using the Maximized View

Click the **maximize view** button or execute the **Maximize** command in the Windows Status Monitor menu to display the maximized view.



Click the tabs of the **maximized view** to access status information and settings.

General Tab



Status

(Only available if the Minolta PagePro 8L printer is connected to your computer.)

This area displays an icon or icons summarizing your current printer and print job status.

Printer Name

The bar in the top middle of the dialog box shows the name of your current default printer.

Status Detail

The area in the middle of the window displays additional printer and job information for the current Windows default printer.

Printer Setup

Click this button to display the printer setup dialog for your selected printer.

Print Manager

This button is only available in Windows 3.1. Click this button to display the **Print Manager** window. **Print Manager** must be enabled (from **Windows Control Panel, Printers**) for this button to be active.

Printer Info

Click this button to display the **Printer Info** window, with more details on your printer (Minolta PagePro 8L only).

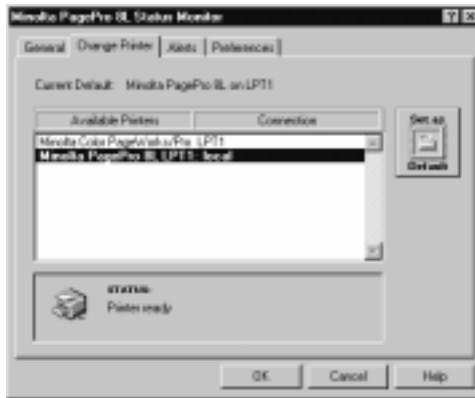
Pause/Resume

(Only available if your printer is directly connected to your computer.)
Click this button to pause your printer. If your printer has already been paused, or if it is waiting for you to take some action, the button will be labeled **Resume**.

Reset Printer

(Only available if your printer is directly connected to your computer.)
Click this button to reset your printer or to clear all current print jobs.

Change Printer Tab



Current Default

The name of the current Windows default device is shown at the top of the tab.

Available Printers

The list in the center of the tab shows the list of currently available printer drivers.

Status

As you move the highlight through the list of available printers, the current status of that printer is shown in the Status area.

Set As Default

Click this button to make the highlighted printer the current Windows default printer.

Alerts Tab



Alert Me When

You can have the Status Monitor warn you of specific printer conditions by sounding a warning message, by bringing its window to the top, or by flashing its icon. Choose which events you want to be notified about here.

Visual Alerts

Select the type of visual alert you want.

Sound Alerts

Turn sound alerts on and off, and select the type of sound alert you want. Click the **Test** button to hear the currently selected set of messages for the current selection.

Note

- A sound driver must be installed to support the sound features of the Alerts tab.

Preferences Tab



Minimized Status Display

In Windows 95, you can choose to have the Status Monitor displayed as a mini-window or in the taskbar. In Windows 3.1, you can choose between a mini-window or icon view. If you've selected Display as mini-window, you can also adjust the font size by entering a number from 8 to 13 in the **Font size** field.

Automatically load Status Monitor when Windows starts up

Check this option if you want the Status Monitor to appear each time you start Windows.

About

Click this button to view the Status Monitor Version number.

Restore Defaults

Click this button to return the values in this screen to their default settings.

Chapter

Maintenance

6

Replacing the Toner Cartridge

Each toner cartridge contains enough toner to produce about 3,000 or 6,000 A4-size prints (depending upon the type of toner cartridge used). This is calculated based on an average image density equivalent to a black-to-white ratio of 5% or less. The actual number of pages obtained from a toner cartridge depends on the image density of the pages you print.

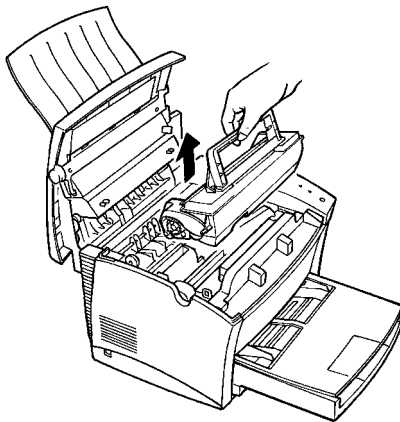
If printed images start to get light, remove the toner cartridge from the printer, shake it back and forth a few times, and then replace it in the printer. If this does not solve the problem, it probably means you need to replace the toner cartridge with a new one.

To replace the toner cartridge

Caution

- The fusing unit inside the printer can become very hot during operation. Do not touch the area to avoid injury.

- 1 Press the top cover release button and open the top cover.
- 2 Remove the old toner cartridge.

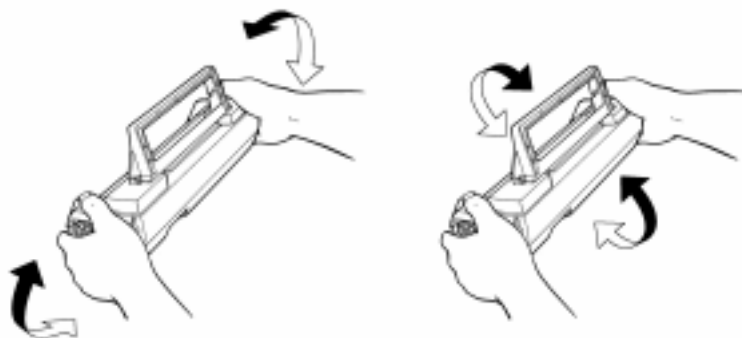


Replacing the Toner Cartridge

Note

- The toner cartridge is made up of non-hazardous materials, and can be disposed of freely. Check local regulations in your area concerning disposal of such items.
- The life span of the toner cartridge is dependent upon the mode and application in which it is used.

- 3** Remove the new toner cartridge from the box it comes packed in. Holding it firmly with both hands, shake it left and right, forward and back in the directions indicated by the arrows in the illustration.

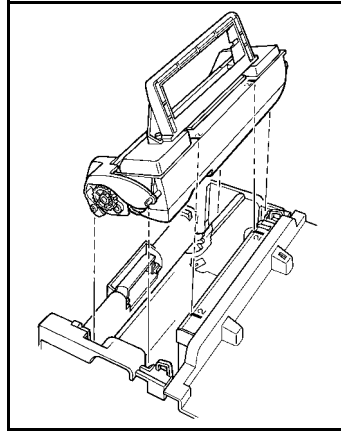
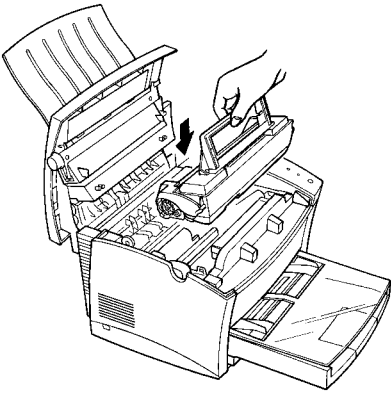


- 4** Holding onto the toner cartridge's handle, lower it into the printer. Make sure that the four pins (two on each side) fit into the grooves inside the printer.

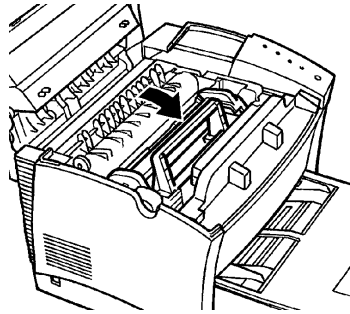
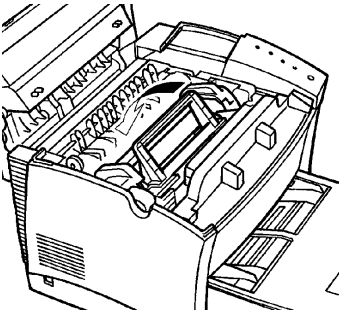
Note

- Color coordinated "2" labels have been affixed to the toner cartridge and to the inside of the printer. Install the toner cartridge by aligning these labels.

Replacing the Toner Cartridge



The cartridge will click into place when it is completely installed.



- 5 Close the top cover and press it down gently but firmly until it locks into place.

Replacing the Drum Cartridge

Each drum cartridge can produce about 20,000 A4-size prints. The actual number of pages obtained from a drum cartridge depends on the image density of the pages you print.

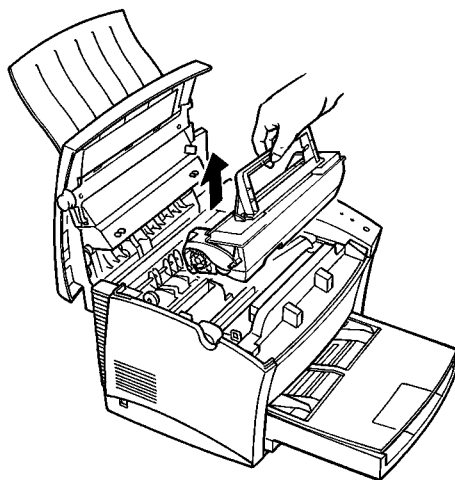
After about 20,000 pages, print images start to become faint and blurred. If this happens, use the following procedure to replace the drum cartridge with a new one.

To replace the drum cartridge

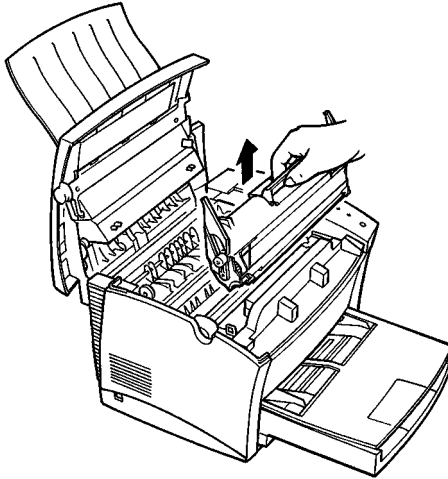
Caution

- The fusing unit inside the printer can become very hot during operation. Do not touch the area to avoid injury.

- 1 Press the top cover release button and open the top cover.
- 2 Remove the toner cartridge.



- 3 Remove the old drum cartridge.



Note

- The drum cartridge is made up of non-hazardous materials, and can be disposed of freely. Check local regulations in your area concerning disposal of such items.

- 4 Remove the new drum cartridge from the box it comes packed in.

Note

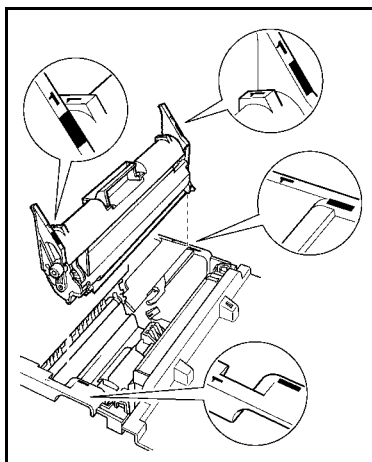
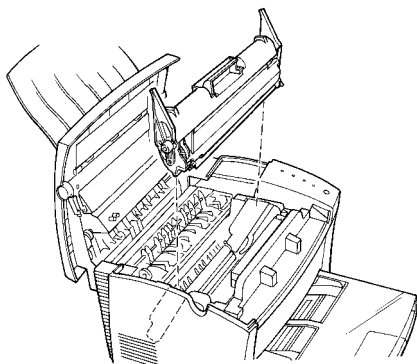
- If you do not plan to immediately install the drum cartridge into the printer, cover it with a cloth to protect it against overexposure to light.

- 5 Install the drum cartridge into the printer, aligning the guides of the cartridge with the grooves inside the printer.

Note

- Color coordinated “1” labels have been affixed to the drum cartridge and to the inside of the printer. Install the drum cartridge by aligning these labels.

Replacing the Drum Cartridge



Note

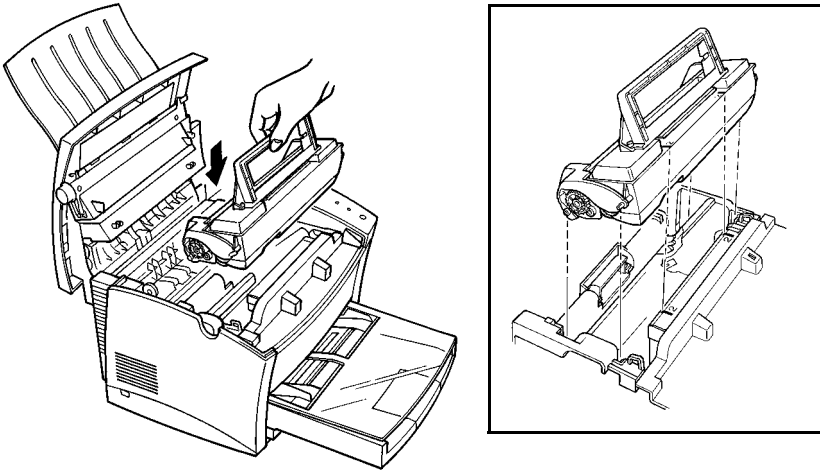
- Make sure the drum cartridge is inserted inside the printer as far as it will go.

- 6 Holding onto the toner cartridge's handle, lower it into the printer. Make sure that the four pins (two on each side) fit into the grooves inside the printer.

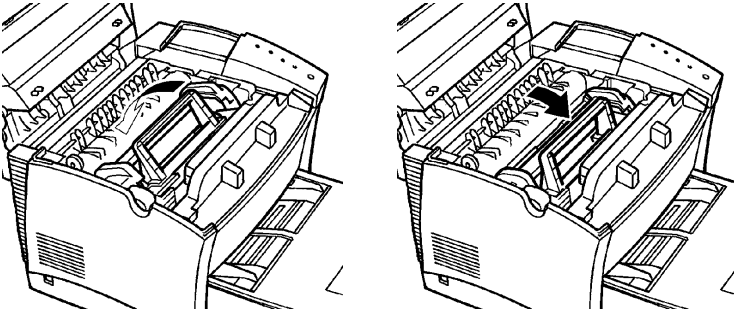
Note

- Color coordinated "2" labels have been affixed to the toner cartridge and to the inside of the printer. Install the toner cartridge by aligning these labels.

Replacing the Drum Cartridge



The cartridge will click into place when it is completely installed.



- 7 Close the printer cover and press it down gently but firmly until it locks into place.

Cleaning the Printer

Dust, dirt, and paper debris on the outer surfaces and inside the printer can interfere with printer performance. Clean the printer regularly.

Caution

- The fusing unit can become very hot during operation. Do not touch the area to avoid injury. Wait for at least 10 minutes after the printer has been turned off and make sure the fusing unit has cooled before cleaning the interior of the printer.

Note

- Use a soft cloth to clean the printer. Never use abrasives or corrosive detergents.

Cleaning the Outside of the Printer

Wipe the outside of the printer with a soft cloth moistened with a neutral, household detergent.

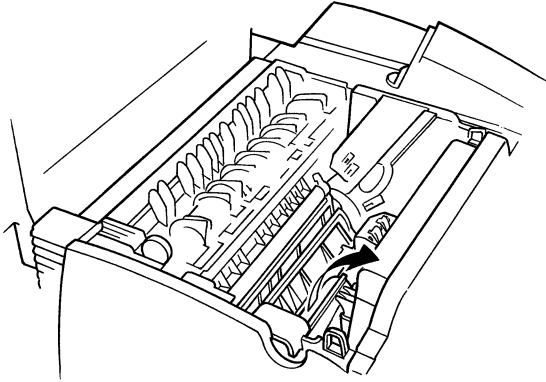
Cleaning the Paper Transport Roller

- 1 Turn off the printer and unplug the power cord.
- 2 Press the top cover release button and open the top cover.
- 3 Remove the toner cartridge and the drum cartridge.

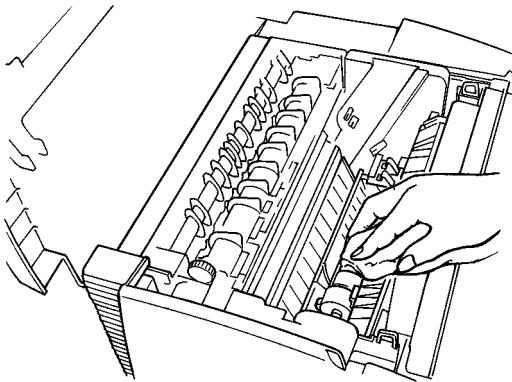
Note

- Immediately wrap the drum cartridge with a cloth to protect it against overexposure to light.

- 4 Pull back on the cover that protects the paper transport roller located at the bottom of the printer chamber.



- 5 Use a soft cloth to wipe the paper transport roller.



- 6 Reinstall the drum cartridge and toner cartridge as shown on page 6-5, 6-6 and 6-7.
- 7 Close the top cover and press it down gently but firmly until it locks into place.

Chapter

Troubleshooting

7

Clearing a Paper Misfeed

Use the following procedure to remove paper misfed inside the printer.

Caution

- The fusing unit inside the printer can become very hot during operation. Do not touch the area to avoid injury.

- 1 Press the top cover release button and open the top cover.
- 2 Remove the toner cartridge and the drum cartridge.

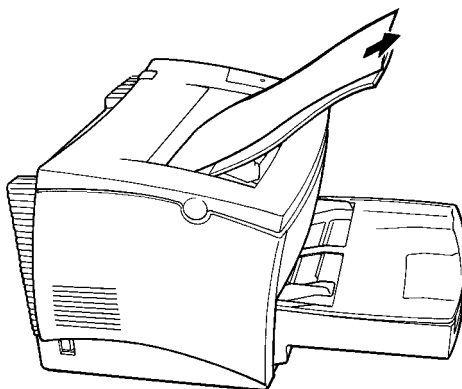
Note

- Immediately wrap the drum cartridge with a cloth to protect it against overexposure to light.

- 3 Clear the paper misfeed using one of the following procedures depending upon the location of the misfeed.

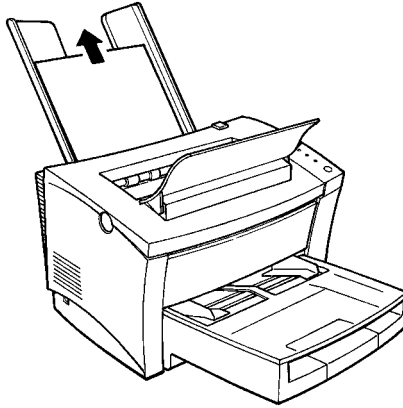
Paper Output Misfeed (Face-down tray)

Pull the misfed paper straight out of the printer.



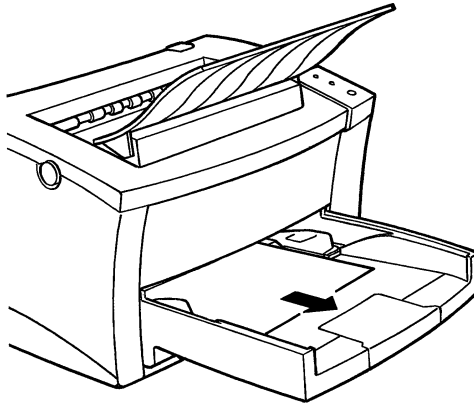
Paper Output Misfeed (Face-up tray)

Pull the misfed paper straight out of the printer.



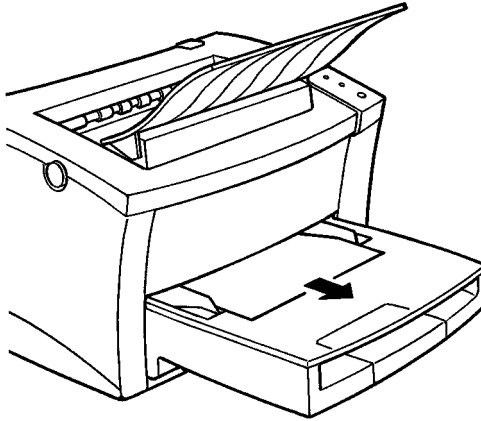
Paper Input Misfeed (from Tray 1)

Remove the tray cover and pull the misfed paper straight out of the printer.



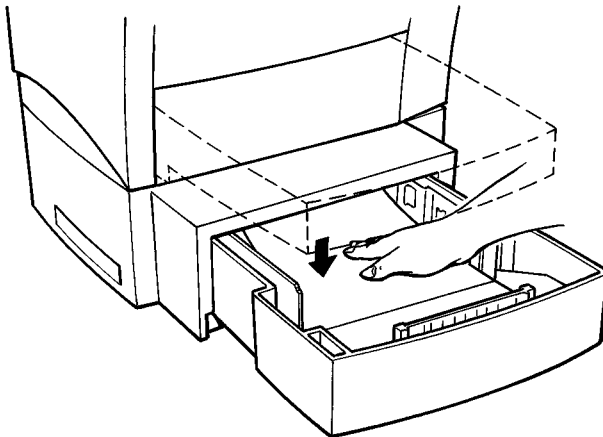
Paper Input Misfeed (from Manual Feed Tray)

Pull the misfed paper straight out of the printer.



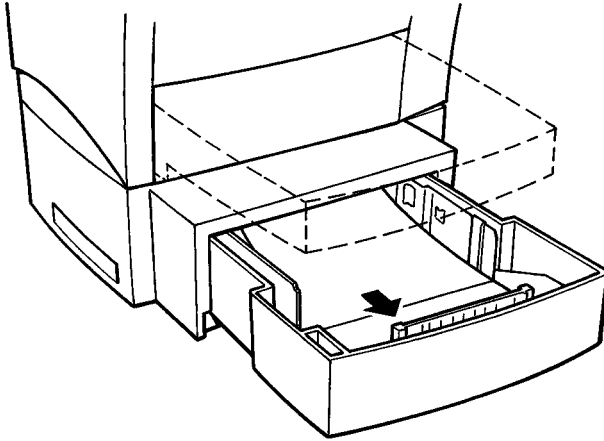
Paper Input Misfeed (from Second Paper Cassette Unit)

Remove the cassette cover and pull out Tray 2 from the second paper cassette unit. Press down on the stack of paper until the paper lifting plate locks.



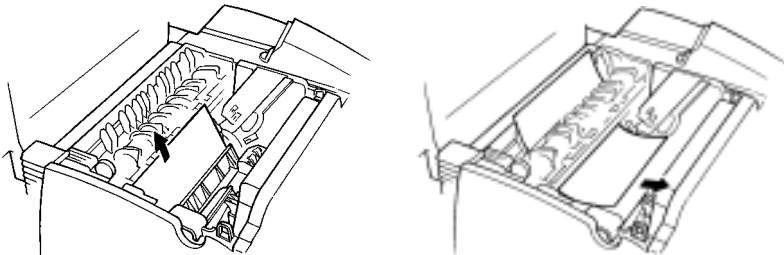
Clearing a Paper Misfeed

Remove the stack of paper from the tray and pull the misfed paper straight out of the printer.



Inside the Printer

Pull the end of the paper that is visible straight out of the printer.



Caution

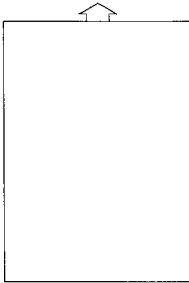
- Do not touch the image transfer roller.

- 4 Reinstall the drum cartridge and toner cartridge as shown on page 6-5, 6-6 and 6-7.
- 5 Close the top cover and press it down gently but firmly until it locks into place.

Print Quality Problems

The following provides information on most print quality problems you might encounter. If the advice provided here does not solve your problem, contact a Minolta dealer.

Blank pages



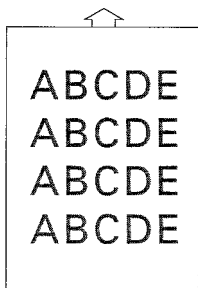
- The toner cartridge may be running out of toner.
Remove the toner cartridge and shake it left and right a few times to distribute remaining toner. If the problem persists, replace the toner cartridge (page 6-1).
- The toner cartridge may be defective.
Remove the toner cartridge and check it for damage. Replace the toner cartridge if necessary (page 6-1).

Black pages



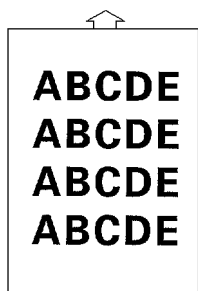
- The toner cartridge may be defective.
Remove the toner cartridge and check it for damage. Replace the toner cartridge if necessary (page 6-1).
- Your printer may require servicing. Contact a Minolta dealer.

Printout too light



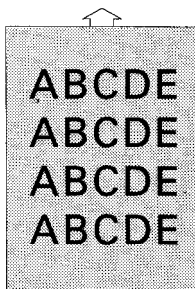
- The toner usage setting of the printer driver may be “Save Toner”.
Change the setting and try printing again.
- The toner cartridge may be running out of toner.
Remove the toner cartridge and shake it left and right a few times to distribute remaining toner. If the problem persists, replace the toner cartridge (page 6-1).
- The toner cartridge may be defective.
Remove the toner cartridge and check it for damage. Replace the toner cartridge if necessary (page 6-1).

Printout too dark



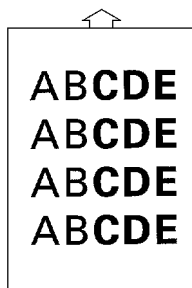
- The toner cartridge may be defective.
Remove the toner cartridge and check it for damage. Replace the toner cartridge if necessary (page 6-1).

Blurred background



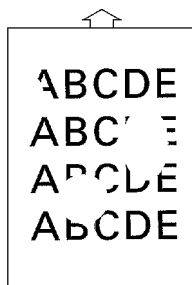
- The toner cartridge may be defective.
Remove the toner cartridge and check it for damage. Replace the toner cartridge if necessary (page 6-1).

Uneven print density



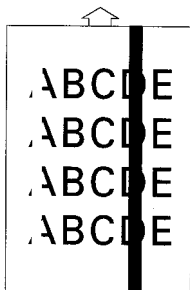
- The toner may be unevenly distributed inside the toner cartridge.
Remove the toner cartridge and shake it left and right a few times to distribute remaining toner.
- The drum cartridge may be defective.
Remove the drum cartridge and check it for damage. Replace the drum cartridge if necessary (page 6-4).

Irregularities



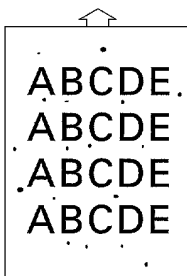
- The paper may have absorbed some moisture due to high humidity or because of direct contact with water.
Since toner will not adhere well to damp paper, replace the paper you are using with dry paper and try printing again.

White or black lines



- The toner cartridge or drum cartridge may be defective. Remove the cartridges and check them for damage. Replace the cartridges with new ones if necessary.

Toner smudges



- The toner may be unevenly distributed inside the toner cartridge. Remove the toner cartridge and shake it left and right a few times to distribute remaining toner.
- The toner cartridge or drum cartridge may be defective. Remove the cartridges and check them for damage. Replace the cartridges with new ones if necessary.
- Smudges on the back of the paper indicate a dirty transport roller. Contact a Minolta dealer.

No output

Failure to produce output may indicate a communications problem between the printer and your computer. Check the following points to see if you can correct the problem. If the problems persist, contact a Minolta dealer.

Are you using the correct type of printer cable?

Save the data you are trying to print and close all the applications currently open on your computer. Next, reset your computer to send a break signal to the printer. Now check your printer cable against the specifications in Chapter 8 of this *User's Manual*.

Note

- When connecting your computer to the parallel connector on the printer, we recommend using a IEEE1284-compliant parallel interface cable (1.5 m long).

Are your computer's communications port settings correct?

Refer to the documentation that comes with your computer and check if its current communications port settings are correct.

Chapter

Specifications

8

PagePro 8L Printer

Type:	Desktop laser beam printer
Print system:	Electrostatic dry powder imaging system
Exposure system:	Laser diode + polygon mirror scanning
Resolution:	600 dpi
Print speed:	8 pages per minute (A4-size paper)
First print:	Within 19 seconds (Letter or A4)
Paper sizes:	A4, A5, JIS B5, DL Envelope, C5 Envelope, B5 Envelope, Hagaki, Letter, Legal, Executive, Com 10 Envelope, Invoice, Monarch Envelope
Media:	Plain paper (60 to 90 g/m ² ; 16 to 24 lbs.); recycled paper (60 to 90 g/m ² ; 16 to 24 lbs.); transparencies; envelopes; postcards; thick paper (90 to 163 g/m ² ; 24 to 43 lbs.)
Paper feeding:	Tray 1 (multipurpose tray); manual feed; Tray 2 (500-sheet second cassette) (option)
Input capacity:	Tray 1 (multipurpose tray): 150 sheets; Tray 2 (second cassette): 500 sheets
Output capacity:	100 sheets (face down) 20 sheets (face up - option)
Warm-up time:	35 seconds or less
Operating temperature:	10°C to 35°C (50°F to 95°F)
Operating humidity:	15 to 85%
Power consumption:	580 W or less
Amperage:	3.0 A or less (220-240 V)
Machine life:	150,000 prints or five years

Toner cartridge life:	3,000 or 6,000 prints/min. (black-to-white ratio of 5% or less)
Drum cartridge life:	20,000 prints/min. (black-to-white ratio of 5% or less)
Power supply:	220-240 V, 50-60 Hz
Acoustic noise:	62 dB or less (operating); 0 dB (power saving mode)
External dimensions:	
Height:	9-2/3" (246 mm)
Width:	15-1/2" (394 mm)
Depth:	11-2/5" (290 mm)
Weight:	Approx. 7 kg (without toner cartridge and drum cartridge)
Interface:	Parallel Centronics (IEEE 1284/ECP and Nibble)
CPU:	68EC000 (20MHz) + Adobe PrintGear Imaging Processor (60MHz)
Standard memory:	2MB (upgrade to 18MB)
Accessories:	Toner cartridge, drum cartridge, power cord, User's Manual, CD-ROM
Options:	Second paper cassette unit; face up tray; NIC (Network Interface Card); SIMM (options available from local dealer)

Second Paper Cassette Unit (Option)

Paper feeding system:	One-way system (multi-feed tray)
Paper types:	Ordinary plain paper (60 to 90 g/m ² ; 16 to 24 lbs.); recycled paper (60 to 90 g/m ² ; 16 to 24 lbs.)
Paper cassettes:	A4, B5, Letter, Legal, Executive
Tray capacity:	Up to 500 sheets (plain and recycled paper)
Operating temperature:	10°C to 35°C (50°F to 95°F)
Operating humidity:	15% to 85%
Weight:	Approximately 8-2/3 lbs. (4 kg) except the legal cassette (tray)

Interface Connector and Cable

Be sure to use only a parallel interface cable that meets the specifications described below.

Length:	Less than 10 feet (3 meters)
Connectors:	Printer: Parallel 36-pin connector
	PC: EIA 25-pin connector
Cable type:	Shielded. Each signal and ground pair should be twisted.
Pin assignments:	IEEE 1284 type-B connector

Note

- Minolta does not warrant the use of any particular cable. The user assumes all responsibility as to the quality and performance of the cable.

SIMM (Option)

You can expand printer memory by adding one single in-line memory module (SIMM). SIMMs are available from your local Minolta dealer.

Capacity:	4, 16MB
Parity:	Non-parity
Type:	Fast page
Access speed:	70 ns or less
Number of Pins:	72

MEMO



Appendix

Glossary

A

Glossary

The following definitions apply specifically to printers.

Adobe Memory Booster

Technology that maximizes the printer's memory to support the printing of complex documents.

application

A software program that performs a particular function, such as generating graphics or spreadsheets.

ASCII

Acronym for American Standard Code for Information Interchange.

base weight

SEE *paper basis weight*.

bitmap

A text character or graphic image that is defined by a pattern of dots.

booklet printing

This option allows you to print the document in pamphlet form.

click

To press and release a mouse button quickly. Often used to select an object. SEE *double-click*.

control panel

A bank of indicators that show the current status of the printer. The panel button that is located on the *control panel* make it possible to perform a variety of different operations.

default

Settings that are preset in the absence of user-specified settings.

dialog box

A box that appears in order for the user to input information or settings required for the printer to operate.

display

What appears upon the screen of the computer.

dpi

Acronym for dots per inch. Refers to the resolution that the printer can produce through the measure of dots printed per inch.

double-click

Pressing a mouse button twice in quick succession while keeping the mouse in place. Often used to open a dialog or enable a function. SEE *click*.

drum cartridge

A part of the printer that picks up toner particles after they have been charged by the laser and then transfers the toner to the paper.

face-down tray

This tray receives the printed documents, face down, as they are output from the printer. The tray can hold up to 100 sheets of paper.

face-up tray (option)

This tray receives the printed documents, face up, as they are output from the printer. The tray can hold up to 20 sheets of paper.

face-up/face-down selection switch

This switch is used to specify the facing (output) direction of documents as they are output from the printer. When the optional Face up tray is installed, the position of this switch determines whether documents are output from the printer facing up (to face-up tray) or facing down (to face-down tray).

fusing unit

A part of the printer that fixes the toner image onto the paper.

gray scale

A series of shades ranging from black to white used to add detail to photo or scanned images, etc.

halftone

A printing technique using a pattern of dots to compose an image. Also known as dithering.

icon

A graphic image on the screen that represents an element.

Image transfer roller

The part inside a page printer that transfers the image from the photoconductive drum to the paper.

laser printer

A high-resolution peripheral used to print text and graphics onto paper or other media. A rotating disk is used to reflect laser beams onto a photosensitive drum; the image of the page is then transferred via electrostatic charged toner. The final image is fused onto a piece of charged paper using heat as it is rolled against the drum, setting the toner onto the paper (or other media).

manual feed tray

An external bay for loading paper into the printer manually.

N-up printing

A printer setting that produces multiple, reduced documents on one sheet of paper.

off line

A state in which the printer cannot receive data or perform any other operation.

on line

A state in which the printer can receive data and operate.

operating system

A program or group of programs that control the functions of the computer and its peripheral devices such as the printer.

paper basis weight

The standard for specifying paper weight. The metric standard, applicable to all grades of paper is gm/m^2 .

paper size guide(s)

Left and right sliding, adjustable holders that secure the paper onto the paper tray.

paper support

An expansion tray for long-sized paper to be placed on Tray 1.

paper transport roller

A rolling mechanism that carries the paper through the various functions of the printer during the printing process.

parallel interface

An output/input port utilizing multiple data circuitry.

parallel interface connector

A connector cable that enables the transfer of data between the printer and the computer.

peripheral device

Any device that can be attached to the computer, such as a printer.

power cord socket

Connects the power cord and the printer.

power switch

Turns power to the printer on and off.

printer

A peripheral device that outputs data from a computer onto paper or other media.

printer driver

A software file that manages commands to the printer.

Print Manager

An application that manages the print queue and the print file.

PrintGear

Adobe's advanced printing technology.

output tray

SEE *face-down tray* and *face-up tray*.

RAM

Acronym for random-access memory.

resolution

SEE *dpi*.

ROM

Acronym for read only memory.

screen font

A typeface that can be displayed on the computer's monitor.

Second Paper Cassette Unit (option)

An optional paper cassette unit that feeds an additional 500 sheets of paper to the printer.

SIMM

Acronym for single in-line memory module.

toner

Ink in the form of a plastic powder that is contained in a cartridge.

toner cartridge

A tube shaped cartridge containing toner powder that is used during the printing process.

top cover

A cover attached to the printer that swings open by pressing a release button. Opening the cover provides easy access to the interior of the printer to perform basic maintenance procedures including the installation and replacement of toner/drum cartridges as well as clearing paper misfeeds.

top cover release button

This button releases the hinge that locks the cover of the printer.
SEE *top cover*.

Tray 1

A tray that can hold up to 150 sheets of paper for feeding into the printer.

Tray 2 (option)

Five types of optional Tray 2 cassettes can be installed into the second paper cassette unit (SEE *second paper cassette unit*). Each cassette can hold up to 500 sheets of one of the following paper sizes: A4, B5, Legal, Letter and Executive.

typeface

Refers to the design of a font.

watermark

A superimposed line of text or graphic upon a printed document.

Appendix

Index

B

-
- A** Accessories 1-2
Accessories tab 4-20
 - B** Booklet printing 4-16
 - C** Cassette cover 1-2
Common buttons 4-11
Computer
 connecting to a computer 2-14
 system requirements 4-1
Control panel 1-2, 1-4
Control panel button 1-6
 - D** Darkness 4-19
Defaults 1-6
DOS Printing Utility 4-24
Drum cartridge 1-3
 replacing the drum cartridge 6-4
 - E** Envelopes 3-10
 - F** Face-down tray 1-2
Face-up/Face-down selection switch 1-3
Face-up tray 1-2, 2-17
Features 1-1
Fine-ART 4-19
500-sheet second cassette 1-2
Form feed 1-6
Fusing unit 1-3
 - G** Grounding 2-2
 - H** Halftone 4-18
 - I** Image control tab 4-18
Image transfer roller 1-3
Indicator lights 1-4
Interface cable 8-4
Interface connector 8-4
 - L** Layout options 4-15
Loading paper onto Tray 1 3-2
Loading paper onto Tray 2 3-5
 - M** Maintenance Chapter 6
Manual feed tray 1-2
Manual paper feed 3-8
Multilanguage font support 4-21
Multipurpose tray See Tray 1
 - O** Options 2-15
Orientation 4-12
 - P** Paper
 loading paper 2-10
 media 8-1
 paper size 3-1
 paper type 3-1
 printing paper 3-1
Paper misfeed 7-1
Paper size guide 1-2
Paper source tab 4-17
Paper support 1-2
Parallel interface connector 1-3
Power cord
 connecting the power cord 2-9
 power cord socket 1-3
Power source 2-2
-

Power switch **1-2**
Precautions **2-1**
Print administration **4-22**
Print quality problems **7-5**
Print settings page **1-6**
Printer **8-1**
 cleaning the printer **6-8**
Printer memory **4-20, 4-21**
Printer parts **1-2**
Printer driver
 installing under Windows 3.1
 4-6
 installing under Windows 95
 4-2
 settings **4-11**
 starting up **4-8**
 using the printer driver **4-8**
Printer supplies **2-6**
PrintGear **4-1**
Printing paper **3-1**

R Reset **1-6**
Resolution **4-12**

S Second paper cassette unit **1-2, 2-15, 8-3**
Selecting output direction **2-17**
Self test **2-13**
Setting-up **2-7**
Setup tab **4-12**
SIMM **2-19, 8-5**
Space requirements **2-3**
Specifications **Chapter 8**
Status Monitor **Chapter 5**

T Testing the printer **2-13**
Toner cartridge **1-3**
 replacing the toner cartridge
 6-1
Toner Usage **4-12**
Top cover **1-3**
Top cover release button **1-2**
2-sided printing **4-14**
Tray 1 **1-2**
Tray 2 **1-2**
Tray cover **1-2**

W Watermark options **4-14**
Windows Status Monitor
Chapter 5

General

Information

CE Marking (Declaration of Conformity)

We declare under sole responsibility that the Laser Beam Printer and Options to which this declaration relates is in conformity with the below specifications.

This declaration is valid for the area of European Community (EC) only.

Product Type	Laser Beam Printer
Product Name	PagePro 8L
Options	Second paper cassette unit; face up tray; NIC (Network Interface Card); SIMM

Safety: EN 60950 / A4 1997, EN 60825 / A11 1997
(Safety of information technology equipment, including electrical business equipment)

EMC: EN 55022 (Class B) / 1994
(Limits and method for measurement of radio disturbance characteristics of information technology equipment (ITE))
EN 61000-3-2 Harmonic Current Emission (Harmonics)
EN 61000-3-3 Voltage Fluctuations (Flicker)

EN 55082-1 / 1992
(Electromagnetic compatibility - Generic immunity standard
Part 1: Residential, commercial and light industry)

IEC 801-2 / 1991 (Electrostatic discharge requirement)
IEC 801-3 / 1984 (Radiated electromagnetic field requirement)
IEC 801-4 / 1988 (Electrical fast transient / burst requirement)

Note: This product was designed for operation in a typical office environment.

EC Directives

Safety: 73 / 23 / EEC and 93 / 68 / EEC / Year of first marking with CE: 1998

EMC: 89 / 336 / EEC and 93 / 68 / EEC

END USER LICENSE AGREEMENT



PLEASE READ CAREFULLY THE LICENSE AGREEMENT BELOW BEFORE OPENING THIS PACKAGED SOFTWARE. OPENING THIS PACKAGE INDICATES YOUR ACCEPTANCE OF THE TERMS AND CONDITIONS BELOW. IF YOU DO NOT AGREE WITH THEM, YOU SHOULD PROMPTLY RETURN THE PACKAGE UNUSED.

1. SOFTWARE

"Software" means the computer program contained in this package (which may include digitally encoded, machine readable, scalable outline font data as encoded in a special format), together with all codes, techniques, software tools, format, design, concepts, methods and ideas associated with the computer program and all documentation related thereto.

2. LICENSE AGREEMENT

This is a license agreement and not an agreement for sale. Minolta owns, or has been licensed from other owners, copyrights in the Software. Except as stated in this Agreement, you are not granted any rights to patents, copyrights, trade names, trademarks (whether registered or unregistered), or any other rights, franchises or licenses in respect of the Software. Title to the Software and any copy made from it is retained by Minolta or such other owners.

3. LICENSE

Minolta, hereby grant to you, and you agree to accept a non-exclusive, non-transferable and limited license and you may:

- (1) install and use the Software on a single computer and one associated Minolta product.
- (2) use the Software only for your own customary business or personal purposes.
- (3) make a copy of the Software for backup or installation purposes only in support of the normal and intended use of the Software.
- (4) transfer possession of copies of the Software to another party by transferring a copy of this Agreement and all other documentation along with at least one complete unaltered copy of the Software, provided that (i) you must, at the same time, either transfer to such other party or destroy all your other copies of the Software. (ii) such transfer of possession terminates your license from Minolta, and (iii) such other party shall accept and be bound by these license terms by its initial use of the Software.

4. RESTRICTIONS

- (1) You shall not without the written consent of Minolta:
 - (i) use, copy, modify, merge or transfer copies of the Software except as provided herein.
 - (ii) reverse assemble or reverse compile the Software except as permitted by law; or
 - (iii) Sublicense, rent, lease or distribute the Software or any copy thereof.
- (2) You shall not export or re-export the Software in any form under violation of export restrictions by the government of your country.

5. LIMITED WARRANTY

Minolta warrants the media on which the Software is recorded to be free from defects in materials and workmanship under normal use. Warranty details and limitations for the Hardware containing the Software are described in the Statement of Limited Warranty which was supplied with the hardware. With the exception of the foregoing express warranties applicable to hardware and media only, the Software is not warranted and is provided "AS IS".

SUCH WARRANTIES ARE IN LIEU OF ALL OTHER WARRANTIES, EXPRESS OR IMPLIED, INCLUDING, BUT NOT LIMITED TO, THE IMPLIED WARRANTIES OF MERCHANTABILITY AND FITNESS FOR A PARTICULAR PURPOSE.

6. LIMITATION OF REMEDIES

IN NO EVENT WILL MINOLTA BE LIABLE FOR ANY LOST PROFITS, LOST DATA, OR ANY OTHER INCIDENTAL OR CONSEQUENTIAL DAMAGES THAT RESULT FROM USE OR INABILITY TO USE THE SOFTWARE, EVEN IF MINOLTA OR ITS AUTHORISED REMARKETERS HAVE BEEN ADVISED OF THE POSSIBILITY OF SUCH DAMAGES OR FOR ANY CLAIM BY YOU BASED ON A THIRD PARTY CLAIM.

7. TERMINATION

You may terminate your license at any time by destroying the Software and all your copies of it or as otherwise described in these terms. Minolta may terminate your license if you fail to comply with these terms. Upon such termination, you agree to destroy all your copies of the Software.

8. GOVERNING LAW

This Agreement shall be governed by the laws of the country where the delivery is made to the original customer.

9. GOVERNMENT END USERS

If you are acquiring the Software on behalf of any unit or agency of the United States Government, the following provisions apply. Use, duplication or disclosure by the Government is subject to restrictions as set forth in the Rights in Technical Data and Computer Software clause at FAR 252.227-7013, subdivision (b)(3)(ii) or subparagraph (c)(1)(ii), as appropriate. Further use, duplication or disclosure is subject to restrictions applicable to restricted rights software as set forth in FAR 52.227-19(c)(2).

YOU ACKNOWLEDGE THAT YOU HAVE READ THIS AGREEMENT, UNDERSTAND IT, AND AGREE TO BE BOUND BY ITS TERMS AND CONDITIONS. NEITHER PARTY SHALL BE BOUND BY ANY STATEMENT OR REPRESENTATION NOT CONTAINED IN THIS AGREEMENT. NO CHANGE IN THIS AGREEMENT IS EFFECTIVE UNLESS WRITTEN AND SIGNED BY PROPERLY AUTHORISED REPRESENTATIVES OF EACH PARTY. BY OPENING THE PACKAGE, YOU AGREE TO ACCEPT THE TERMS OF THIS AGREEMENT.

Contrat utilisateur de la licence

F

LISEZ ATTENTIVEMENT LE CONTRAT DE LA LICENCE CI-DESSOUS AVANT D'OUVRIRE L'EMBALLAGE CONTENANT LE LOGICIEL. L'OUVERTURE DE CET EMBALLAGE SIGNIFIE QUE VOUS ACCEPTEZ LES CONDITIONS QUI SE TROUVENT CI-DESSOUS. SI VOUS LES RÉFUTEZ, MERCI DE NOUS RETOURNER L'EMBALLAGE NON DÉBALLÉ DANS LES PLUS BREFS DÉLAIS.

1. Le logiciel

'Logiciel' veut dire le programme de l'ordinateur contenu dans cet emballage (ce qui peut comprendre les décodeurs numériques, lecteurs électroniques...) ainsi que tous les codes, les techniques, les périphériques, les formats, les designs, les concepts, les méthodes et les idées associés au programme de l'ordinateur et toute la documentation qui s'y rattache.

2. Le contrat de licence

Ceci est un contrat de licence et non un contrat de vente. Minolta possède ou a obtenu une licence d'autres propriétaires, des droits de reproduction dans le domaine des logiciels. A l'exception de ce qui est indiqué dans cet accord, vous n'avez aucun droit sur les brevets, les droits de reproduction, les noms de marque (enregistrés ou pas), ni aucun autre droit, franchise ou licence vis à vis de ce logiciel. Le titre de ce logiciel et tout autre copie faite à partir de celui-ci sera gardé par Minolta, ou d'autres propriétaires.

3. La licence

Par la présente Minolta vous accorde (et vous acceptez) une licence limitée, non exclusive et non transférable, ce qui vous autorise à :

1. Installer et utiliser le logiciel sur un seul ordinateur et relié au produit Minolta.
2. Utiliser le logiciel pour vos propres besoins professionnels et personnels.
3. Faire une copie du logiciel par mesure de sécurité, ou pour des besoins d'installation, seulement dans la cadre de l'utilisation normale et prévue du logiciel.
4. Transférer la propriété des copies du logiciel à une tierce personne, et en transférant une copie de cet accord et toute autre documentation, en même temps qu'une copie au moins de ce logiciel (sans modification), étant entendu que (i) vous avez par la même occasion, soit tout transmis à cette tierce personne, soit détruit toutes vos autres copies du logiciel. (ii) Un tel transfert met fin à votre propre licence auprès de Minolta et, (iii) donc lie le nouveau propriétaire aux conditions de la licence dès le début de l'utilisation du logiciel.

4. Les restrictions.

- (1) Sans l'accord écrit de Minolta vous ne devez pas :
 - (i) Utiliser, copier, fusionner, ou transférer des copies du logiciel, sauf s'il s'agit de cas prévus dans ce contrat. (ii) Déprogrammer et re-programmer le logiciel en dehors des limites prévues par la loi, ou (iii) Distribuer, louer ou sous louer le logiciel ou sa copie.
- (2) Vous ne devez pas exporter ou réexporter le logiciel sous aucune forme, sous peine de violation des restrictions exports imposées par le gouvernement de votre pays.

5. Une garantie limitée.

Minolta garantie le support sur lequel le logiciel est enregistré contre tout défaut matériel ou de fabrication, dans les conditions normales d'utilisation.

Les détails et limites de la garantie concernant le matériel qui contient le logiciel sont décrits sur la déclaration de garantie limitée fournie avec le matériel informatique. A l'exception des garanties expresses en vigueur, applicables au matériel informatique et audiovisuel uniquement, le logiciel n'est pas garanti et est fourni «tel-quel».

De telles garanties existent à la place de toutes autres garanties, expresses ou tacites, y compris mais non pas limitées aux garanties tacites de ventes et bon fonctionnement dans un but bien précis.

6. Etendue des responsabilités

EN AUCUN CAS, MINOLTA NE POURRA ÊTRE DÉSIGNÉ RESPONSABLE POUR PERTE DE PROFITS, PERTE DE DONNÉES, OU AUTRES DOMMAGES ACCIDENTELS OU CONSÉCUTIFS, DOMMAGES QUI RÉSULTENT DE L'UTILISATION OU DE LA MAUVAISE UTILISATION DU LOGICIEL, MÊME SI MINOLTA OU SES REVENDEURS LÉGAUX ONT ÉTÉ AVERTIS DE LA POSSIBILITÉ DE TELS DOMMAGES, OU POUR UNE RÉCLAMATION FAITE PAR VOUS AU NOM D'UNE TIERCE PERSONNE.

7. Résiliation du contrat.

Vous pouvez mettre un terme à votre licence à tout moment en détruisant le logiciel et toutes ses copies comme prévue dans le contrat, Minolta peut mettre fin à votre licence en cas de non respect du contrat.

Dans ce cas, vous acceptez de détruire toutes vos copies du logiciel.

8. La loi

Cet accord doit être soumis aux lois du pays où la livraison s'effectue, chez le client d'origine.

9. Contrat utilisation pour le gouvernement.

Si vous faites l'acquisition du logiciel au nom d'un service ou organisme du Gouvernement des Etats-Unis, les dispositions suivantes s'appliquent. Utilisation, duplication, ou divulgation sont sujettes aux restrictions mentionnées dans «Rights in Technical Data and Computer Software» FAR 252.227-7013, section (b)(3)(ii) ou chapitre (c)(1)(ii), as approprié. Toute utilisation supplémentaire, duplication ou divulgation est sujette aux restriction applicables aux droits restreints sur les logiciels définis dans FAR 52.227-19(c)(2).

VOUS RECONNAISSEZ AVOIR LU, COMPRIS LE PRÉSENT CONTRAT ET ACCEPTEZ D'ÊTRE LIÉ PAR SES CONDITIONS. AUCUNES DES PARTIES NE DOIT ÊTRE LIÉES PAR UNE MESURE OU PAR UNE DISPOSITION NE FIGURANT PAS DANS CE CONTRAT. TOUTE MODIFICATION DE CE CONTRAT NE SERA VALABLE QUE S'IL EST ÉCRIT ET SIGNÉ PAR LES REPRÉSENTANTS DÉSIGNÉS PAR CHAQUE PARTIE.

EN OUVRANT CET EMBALLAGE, VOUS ADHÉREZ AUX TERMES DE CE CONTRAT.

ENDVERBRAUCHER-LIZENZVERTRAG

D

Vor der Benutzung des beigefügten Produktes sind die nachstehenden Bedingungen sorgfältig zu lesen. Mit der Benutzung des Produktes erkennen Sie als Lizenznehmer die Bedingungen dieses Vertrages an. Wenn Sie mit den Bedingungen nicht einverstanden sind, senden Sie die ungeöffnete Packung umgehend zurück. Bei diesem Vertrag handelt es sich um einen Lizenzvertrag und nicht um einen Kaufvertrag. MINOLTA ist Inhaberin der Urheberrechte an dem Microcode, den Computerprogrammen und codierten Schriften einschließlich der Bitmap-Schriften und Konturschriften (nachfolgend insgesamt als „Software“ bezeichnet), die sich in diesem Minolta-Produkt befinden, oder MINOLTA besitzt die Lizenzen an den entsprechenden Urheberrechten anderer Inhaber. Der Lizenznehmer erwirbt keine Rechte an der Software. MINOLTA oder die genannten anderen Inhaber bleiben Inhaber der Rechte an der in der Packung enthaltenen Kopie der Software und jedweder von ihr angefertigten Kopie. Die Verantwortung für die Wahl zur Erzielung der gewünschten Ergebnisse, Installation, Benutzung und die mit der Software erzielten Ergebnisse liegt allein bei Ihnen als Lizenznehmer.

LIZENZ

Ihnen als Lizenznehmer ist es gestattet:

1. die Software auf einem Computer und einem angeschlossenen Minolta-Produkt zu installieren und zu benutzen;
2. ausschließlich zu Sicherungs- oder Installationszwecken eine Kopie der Software für die normale und beabsichtigte Erstellung zu benutzen. In diesem Fall ist der Lizenznehmer verpflichtet, auf der Kopie die sich auf der Software befindenden Vermerke über Urheberrecht und Warenzeichen entsprechend anzubringen;
3. das Eigentum an Kopien der Software an Dritte zu übertragen durch Überlassung dieser Vertragsausfertigung und des sonstigen dazugehörigen schriftlichen Materials sowie mindestens einer vollständigen, unveränderten Kopie der Software, wenn folgende Bedingungen erfüllt sind: **(i)** Wenn gleichzeitig alle anderen Kopien der Software des Erstlizenznehmers dem Dritten überlassen oder diese Kopien vernichtet werden, **(ii)** wenn mit der Übertragung des Eigentums der Lizenzvertrag des Erstlizenznehmers mit MINOLTA gekündigt wird und **(iii)** wenn der Dritte diese Lizenzbedingungen mit der erstmaligen Benutzung der Software annimmt und die entsprechenden vertraglichen Verpflichtungen eingeht;
4. die auf der Software vorhandenen Warenzeichen und den entsprechenden Vermerk über den Namen des Warenzeicheninhabers ausschließlich im Rahmen der anerkannten Praxis im Umgang mit Warenzeichen zu verwenden.

Dem Lizenznehmer ist nur mit schriftlicher Zustimmung von MINOLTA erlaubt:

1. Kopien der Software zu anderen als den hier ausdrücklich genannten Zwecken zu verwenden, anzufertigen, zu verändern, mit anderer Software zu mischen oder zu übertragen, 2. die Software zu entassemblieren oder entkompilieren, vorbehaltlich anderslautender gesetzlicher Bestimmungen oder 3. die Software oder eine Kopie davon zu vermieten, zu verleasen, zu übertragen oder eine Unterlizenz zu erteilen.

HAFTUNGSBESCHRÄNKUNGEN

MINOLTA gewährt bei sachgerechter Benutzung eine Garantie auf Material und Verarbeitung der Hardware, die die Software beinhaltet. Die Haftungsbedingungen und -beschrän-

kungen bezüglich der Hardware, die die Software beinhaltet, sind in den Gewährleistungsbedingungen aufgeführt, die mit der Hardware ausgeliefert wurden. Neben dieser Gewährleistung auf Hardware und Medien wird keine weitere Haftung für die Software übernommen. Die Software wird in dem Zustand geliefert, in dem sie sich bei der Übergabe befindet. Diese Gewährleistungen gelten anstelle etwaiger anderer ausdrücklicher oder stillschweigender Gewährleistungen einschließlich - jedoch nicht beschränkt hierauf - der gesetzlich vermuteten Gewährleistung bezüglich der Nutzung und Eignung der Software für einen bestimmten Zweck.

BESCHRÄNKUNG VON GEWÄHRLEISTUNGSANSPRÜCHEN

IN KEINEM FALL HAFTET MINOLTA FÜR ENTGANGENEN GEWINN ODER VERLORENE EINSPARUNGSMÖGLICHKEIT ODER GELEGENTLICH WEGEN DES GEBRAUCHS ENTSTANDENE ODER ANDERER FOLGESCHÄDEN, SELBST WENN MINOLTA ODER DIE AUTORISIERTEN HÄNDLER ÜBER MÖGLICHE SCHÄDEN DIESER ART UNTERRICHTET WURDEN. MINOLTA HAFTET AUCH NICHT FÜR ANSPRÜCHE DES LIZENZNEHMERS AUFGRUND EINES ANSPRUCHS EINES DRITTEN.

ALLGEMEINE BESTIMMUNGEN

Der Lizenznehmer kann den Lizenzvertrag jederzeit beenden, indem er sämtliche Kopien der Software vernichtet oder entsprechend anderweitiger Bestimmungen dieses Vertrages handelt. MINOLTA kann den Lizenzvertrag mit dem Lizenznehmer beenden, wenn dieser diese Bedingungen nicht einhält. In diesem Fall erklärt sich der Lizenznehmer damit einverstanden, alle Kopien der Software zu vernichten. Jedweder Versuch, eine Kopie der Software zu anderen als den hier ausdrücklich genannten Zwecken zu vermieten, zu verleasen, zu übertragen oder eine Unterlizenz hiervon zu erteilen, ist nichtig. Der Lizenznehmer erkennt hiermit an, daß er für die sich aus diesem Vertrag etwa ergebenden persönlichen Steuern haftet. Rechte aus diesem Vertrag können von den Parteien unabhängig von der Art der Ansprüche nur innerhalb von zwei Jahren nach Entstehen des Anspruchs geltend gemacht werden. Bei Verstößen gegen die Bestimmungen im Abschnitt unter der Überschrift „Lizenz“ gilt eine Frist von 4 Jahren. Für diesen Vertrag gilt im übrigen das Recht des Landes, indem dieses Produkt erworben worden ist.

LIZENZNEHMER REGIERUNG

Handelt der Lizenznehmer für eine oder im Auftrage einer Einrichtung der Amerikanischen Regierung, gelten die folgenden Bestimmungen: Nutzung, Vervielfältigung oder Offenlegung durch die Regierung unterliegt den Rights in Technical Data and Computer Software clause at FAR 252.227-7013, subdivision (b)(3)(ii) oder subparagraph (c)(1)(ii).

Eine Nutzung, Vervielfältigung oder Offenlegung darüberhinaus unterliegt den Bestimmungen der Restricted Rights Software in FAR 52.227-19(c)(2).

SIE ALS LIZENZNEHMER ERKLÄREN, DIESEN LIZENZVERTRAG GELESEN UND VERSTANDEN ZU HABEN. SIE ERKENNEN DIE LIZENZBEDINGUNGEN AN. WEDER SIE NOCH MINOLTA FÜHLEN SICH AN BEDINGUNGEN GEBUNDEN, DIE NICHT IN DIESEM VERTRAG ENHALTEN SIND. ETWAIGE ERGÄNZUNGEN ODER ÄNDERUNGEN ZU DIESEM VERTRAG SIND NUR RECHTSGÜLTIG, WENN SIE SCHRIFTLICH NIEDERGELEGT UND UNTERSCHRIEBEN SIND VON AUTORISIERTEN VERTRETERN BEIDER PARTEIEN.

MIT DEM ÖFFNEN DER VERPACKUNG ERKENNEN SIE SÄMTLICHE PUNKTE DIESES VERTRAGES AN.

CONTRATTO DI LICENZA D'USO



LEGGETE ATTENTAMENTE IL CONTRATTO DI LICENZA SOTTO RIPORTATO PRIMA DI APRIRE IL PACCHETTO SOFTWARE. L'APERTURA DEL PACCHETTO DA PARTE VOSTRA INDICA LA VOSTRA ACCETTAZIONE DEI TERMINI E DELLE CONDIZIONI SOTTO RIPORTATE. IN CASO DI DISACCORDO, VI PREGHIAMO DI VOLER RESTITUIRE IMMEDIATAMENTE IL PACCHETTO ANCORA SIGILLATO.

1. SOFTWARE

“Software” significa il programma per computer contenuto in questo pacchetto (che potrebbe includere dati di font outline scalabili codificati digitalmente, leggibili dalla macchina come codificati in uno speciale formato), unitamente a tutti i codici, tecniche, strumenti di software, formato, design, concetti, metodi ed idee associate con il programma per computer e tutta la documentazione relativa.

2. CONTRATTO DI LICENZA

Il presente è un contratto di licenza e non un contratto di vendita. MINOLTA possiede, ovvero ha avuto la licenza da parte degli altri proprietari, i diritti di autore per il Software. Ad eccezione di quanto dichiarato nel presente Contratto, non avrete alcun diritto di brevetto, copyright, nomi di marchi, marchi di fabbrica (sia registrati o non registrati), o qualsiasi altro diritto, mandato di rappresentanza o licenza rispetto a questo Software.

3. LICENZA

Con il presente contratto MINOLTA conferisce licenza d'uso, non trasferibile né sub-licenziabile, del software descritto al punto uno (1), del presente contratto in base alla quale il licenziatario:

- (1) avrà facoltà d'installare ed usare il Software su un solo computer e una sola periferica Minolta.
- (2) avrà facoltà di usare il Software solo per la sua attività o per scopo personale.
- (3) avrà facoltà di fare una copia del Software a scopo di backup o di installazione solo come supporto del normale e stabilito uso del Software.
- (4) avrà facoltà di trasferire il possesso di copie del Software a terzi trasferendo contestualmente il presente contratto e tutta la documentazione relativa con almeno una copia completa e inalterata del Software, a patto che: (i) trasferisca a detti terzi e, al tempo stesso, distrugga tutte le altre copie del Software. (ii) Tale trasferimento di possesso fa terminare la licenza da parte di Minolta con il licenziatario, mentre (iii) detti terzi dovranno accettare e saranno legati da questi termini di licenza per quanto riguarda l'uso iniziale del Software.

4. OBBLIGHI DEL LICENZIATARIO

- (1) Il licenziatario, salvo consenso scritto di MINOLTA:
 - (i) non potrà usare, riprodurre, copiare, modificare in alcun modo, manipolare e trasferire le copie del Software al di fuori di quanto qui previsto.
 - (ii) non potrà eseguire “reverse assembling” o “reverse compiling” sul Software tranne quanto consentito dalla legge; oppure
 - (iii) non potrà sub-licenziare, cedere a terzi, noleggiare o distribuire il Software o copia dello stesso, salvo quanto previsto al punto tre (3) del presente accordo.
- (2) Il licenziatario non potrà esportare o riesportare il Software in nessuna forma pena la violazione delle restrizioni di esportazione dettate dal Governo locale.

5. GARANZIA LIMITATA

MINOLTA garantisce che i mezzi su cui il Software è registrato sono privi di difetti nei materiali e nella fabbricazione secondo un normale uso. I dettagli della garanzia e le limitazioni per l'Hardware contenente il Software sono descritti nella Dichiarazione di Garanzia Limitata che viene fornita insieme all'hardware. Con l'eccezione delle summenzionate garanzie espresse applicabili solamente all'hardware e ai mezzi, il Software non è garantito ma fornito "nello stato in cui trovasi".

TALI GARANZIE SONO IN LUOGO DI TUTTE LE ALTRE GARANZIE, ESPRESSE O IMPLICITE, INCLUSE, MA NON LIMITATE ALLE GARANZIE IMPLICITE DI COMMERCIALIZZABILITA' E DI IDONEITA' AD UNO SCOPO PARTICOLARE.

6. RESPONSABILITA' DELLA CONCEDENTE

IN NESSUN CASO MINOLTA SARA' RESPONSABILE PER QUALSIASI PERDITA DI PROFITTO, PERDITA DI RISPARMIO, O QUALSIASI DANNO ACCIDENTALE CHE RISULTI DALL'USO O DALL'INCAPACITA' D'USO DEL SOFTWARE, ANCHE SE MINOLTA O I SUOI CONCESSIONARI AUTORIZZATI SONO STATI AVVISATI DELLA POSSIBILITA' DI TALI DANNI O DI QUALSIASI RECLAMO DA PARTE DEL LICENZIATARIO BASATO SU UN RECLAMO DI TERZI.

7. RISOLUZIONE DEL CONTRATTO

Potete porre termine alla vostra licenza in qualsiasi momento distruggendo il Software e tutte le vostre copie, oppure come altrimenti descritto in questi termini.

Minolta può porre termine alla vostra licenza in caso mancate di rispettare questi termini. Resta inteso che all'atto di tale termine, voi distruggerete tutte le vostre copie del Software.

8. FORO COMPETENTE

Il presente contratto verrà regolato dalle leggi del Paese in cui è stata effettuata la consegna al cliente originale.

9. UTENTI FINALI GOVERNATIVI

Se state acquistando il Software per conto di qualsiasi ente od agenzia del Governo degli Stati Uniti, si applicano i seguenti provvedimenti. L'uso, la duplicazione o la divulgazione da parte del Governo sono soggetti alle restrizioni stabilite nella clausola "Rights in Technical Data" e in "Computer Software" in FAR 252.227-7013, sottodivisione (b)(3)(ii) o sottoparagrafo (c)(1)(ii) rispettivamente. Ulteriore uso, duplicazione o divulgazione sono soggetti alle restrizioni applicabili ai limitati diritti di software stabiliti nel FAR 52.227-19(c)(2).

PRENDETE ATTO CHE AVETE LETTO IL PRESENTE ACCORDO, CHE LO AVETE COMPRESO, E CHE CONCORDATE DI ESSERE LEGATI DA QUESTI TERMINI E CONDIZIONI. NESSUNA DELLE PARTI SARA' LEGATA DA ALCUNA DICHIARAZIONE O RAPPRESENTAZIONE NON CONTENUTA NEL PRESENTE CONTRATTO. NESSUN CAMBIAMENTO NEL PRESENTE CONTRATTO SARA' EFFETTIVO A MENO CHE NON VENGA SOTTOSCRITTO DAI RAPPRESENTANTI PROPRIAMENTE AUTORIZZATI DA CIASCUNA PARTE. APRENDO IL PRESENTE PACCHETTO, CONCORDATE DI ACCETTARE I TERMINI DEL PRESENTE CONTRATTO.

Addresses MINOLTA-Partners in Europe

Austria • Minolta Austria GmbH, Amalienstrasse 59-61, 1131
Wien ☎ 01-878-82-0, Fax 01-878-82-271

Baltia • Minolta Baltia, Didzioji 11, 2001 Vilnius/Lithuania
☎ 02-222-029, Fax 02-223-060

Belgium • Minolta Business Equipment (Belgium) N.V./S.A.,
Zoning Keiberg, Excelsiorlaan 10/12, 1930 Zaventem
☎ 02/720.96.70 ext. 341, Fax 02/720.97.57

Bulgaria • Minolta Bulgaria o.o.d., Ulica Christo Georgiev 4, 1504
Sofia ☎ 02-943-35-22, Fax 02-943-32-07

Croatia • Minolta Zagreb d.o.o., Supilova 7, 10 000 Zagreb
☎ 01-611-6655, Fax 01-611-6656

Czechia • Minolta spol, s.r.o., Veverí 102, 659 10 Brno
☎ 05-41 558 511, Fax 05-41 212 681

Denmark • Minolta Danmark a/s, Valhøjs Allé 160, 2610 Rødovre
☎ 36 37 04 50 eller 36 37 04 52, e-mail: printer@minolta.dk

Finland • Renu Oy, P.O. Box 93, 02201 Espoo
☎ 09-42061, Fax 09-4206 200

France • Minolta France Sa., Div. Equipement de Bureau, 365-367
Route de Saint Germain, 78424 Carrieres Sur Seine Cedex
☎ 1-3086-6274, Fax 1-3086-6287

Germany • Minolta Germany, Minoltaring 11, 30855 Langenhagen
☎ 0 18 03 - 22 74 04 (Ortstarif), Fax 0 18 03 - 23 74 04 (Ortstarif)

Hungary • Minolta Magyarország KFT, Galvani u. 4, 1117
Budapest ☎ 01-206-22-44, Fax 01-206-1849

Iceland • Magnús Kjaran H.F., Sidumúli 14, 108 Island
☎ 00354/5/10 55 00, Fax 00354/5/10 55 09

Italy • Minolta Italia, Via Stephenson 37, 20157 Milano
☎ 02-39011-1, Fax 02-39011-219

Netherland • Kopieersystemen Netherland B.V., Schipholweg
343, 1171 PL Badhoevedorp ☎ 020-6584222, Fax 020-6597436

Norway • Minolta Norway A.S, Nedre Rommen 3, 0988 Oslo,
☎ 22 78 98 00, Fax 22 78 98 50

Poland • Minolta Polska sp.zo.o., Ul. Nowolipie 7A, 00-146
Warszawa ☎ 022-83 11480

Portugal • Minolta Portugal Lda., Av. do Brasil 33a, 1700 Lisboa
☎ 01-79300-16, Fax 01- 7969547

Romania • Minolta Romania SRL, Soseaua Oltenitei 35-37, etaj 8,
Sector 4, 712 12 Bucuresti ☎ 01-330 2547, Fax 01-330 6980

Slovakia • Minolta Slovakia spol. s r.o.,Cernysevskeho 10, 851 01
Bratislava ☎ 07-586-2555, Fax 07-586-2313

Slovenia • Minolta Slovenia d.o.o., Ptujaska 19, 1000 Ljubljana
☎ 061-168-11-05, Fax 061-168-10- 28

Spain • Minolta Business Equipment Spain S.A., Paseo de la
Castellana 254, 28046 Madrid ☎ 91- 7337811, Fax 91-7332262

Sweden • Minolta Business Equipment Ab, Albygatan 114, 17109
Solna ☎ 08-627 75 00, Fax 08-627 76 07

Switzerland • Messerli Informationstechnik Océ (Schweiz) AG,
Sägereistrasse 29, 8152 Glattbrugg ☎ 01/829 14 14,
Fax 01/829 14 11

United Kingdom • Minolta U.K. BEO, Rooksley Park, Precedent
Drive /Rooksley, Milton Keynes MK 13 8Hf ☎ 0345-211-211,
Fax 01908-200-379

Yugoslavia • Minolta d.o.o. Beograd, Blagoja Parovica 21, 11 000
Beograd ☎ 011-550-997, Fax 011-544-982

MINOLTA GUARANTEE CERTIFICATE



1. DEFINITIONS

„MINOLTA“:	MINOLTA GmbH Registered Office
„the Unit“:	the MINOLTA product for which this Users’s Manual is valid
„the Software“:	MINOLTA unit driver Software. In the case that software supplied by other manufacturers is added to or purchased with the MINOLTA unit, only the terms of guarantee by those original manufacturers are valid
„the Unit Guarantee Period“:	One year commencing the date of purchase of the Unit
„the Software Guarantee Period“:	Ninety (90) days commencing the date of purchase of the Software
„the Operating Instructions“:	Those instructions contained in the manuals supplied with both the Unit and the Software
„Valid Receipt“:	a receipt indicating the date of purchase, the location of purchase, the purchase price, the MINOLTA dealers’s address, the Unit and/or Software type and serial number

2. SCOPE OF GUARANTEE

2.1. UNIT

Subject to Clause 2.3 this Guarantee covers all material and production faults in the Unit which are notified by the purchaser to MINOLTA within the Unit Guarantee Period

2.2. SOFTWARE

Subject to Clause 2.3 this Guarantee covers all faults with the Software which are notified by the purchaser to MINOLTA within the Software Guarantee Period

2.3. EXCLUSIONS

This Guarantee does not cover damage to Units and Software resulting from, but not limited, to the following:

- dropping, impact, sand, moisture, misuse, unauthorized interference of third parties, chemical corrosion, non-observance of the Operating Instructions, damage in transit or force majeure;
- the use of accessories, units or material not produced, distributed licenced or authorised by MINOLTA; and
- repairs or alterations carried out by any workshop not authorised by MINOLTA

This Guarantee does not cover damage to Software resulting from the purchaser’s failure to install the Software in accordance with the Installation Instructions on a computer suitable for the intended purpose

3. REPAIR AND REPLACEMENT

3.1. UNIT

During the Unit Guarantee Period MINOLTA will either repair or replace faulty Units falling within Clause 2.1. MINOLTA will inform the purchaser as to the choice of remedy within a reasonable time of inspecting the faulty Unit

3.2. SOFTWARE

During the Software Guarantee Period MINOLTA will replace faulty Software falling within Clause 2.2 within a reasonable time of inspecting the faulty Software

3.3 FAILURE

Should MINOLTA fail to repair or replace the faulty Unit or faulty Software within the time limit specified in Clauses 3.1 and 3.2 the purchaser shall be entitled to claim a refund of the purchase price once the purchaser returns the faulty Unit or Software to MINOLTA

4. VALIDITY OF GUARANTEE

This Guarantee is only valid for all new Units and new Software purchased from an authorised MINOLTA dealer

5. CLAIMS UNDER GUARANTEE

If a purchaser wishes to make a claim under this Guarantee he/she must present a Valid Receipt relating to the faulty Unit or faulty Software

MINOLTA reserves the right to verify the validity of the receipt

6. REIMBURSEMENT OF COSTS

If Units or Software presented to MINOLTA for repair or replacement show either no fault symptoms or fault symptoms resulting from any matter referred to in Clause 2.3 any costs incurred by MINOLTA are to be borne by the purchaser

7. CONSEQUENTIAL LOSS

MINOLTA shall not be liable for any consequential or indirect loss suffered by the purchaser whether this loss arises from breach of duty in contract or tort in any other way (including loss arising from MINOLTA's negligence). Non-exhaustive illustrations of consequential or indirect loss would be:

- a) loss of profit;
- b) loss of contracts;
- c) damage to property of the purchaser or anyone else;
- d) data loss; and
- e) personal injury to the purchaser or anyone else (but only so far as such injury is not caused by MINOLTA's negligence).

8. STATUTORY RIGHTS

This Guarantee does not affect the purchaser's statutory rights.

1. Takuun voimassaoloaika

MINOLTA GMBH (tästä tekstistä "MINOLTA") myöntää vuoden takuun laitteelle ja 90 päivän takuun MINOLTA-ohjelmistolle.

Molemmissa tapauksissa takuu on voimassa ostopäivästä lähtien.

2. Takuun laajuus

Tämä takuu ei kata luonnollisesta ulkoisesta ja mekaanisesta kulumisesta ja normaalista huollon tarpeesta johtuvia töitä.

Laitetakuu - Takuu kattaa kaikki laitteen materiaali- ja valmistusvirheistä johtuvat viat, jotka ilmenevät vuoden kuluessa ostopäivästä.

Ohjelmistotakuu - Laitetuen lisäksi MINOLTA myöntää 90 päivän takuun MINOLTA-ajuriohjelmistolle edellyttäen, että ohjelmisto on asianmukaisesti asennettu tähän tarkoitukseen soveltuvaan tietokoneeseen ja että mukana toimitettavia asennusohjeita on noudatettu huolellisesti. MINOLTA takaa edelleen, että ohjelmiston tallennusvälineessä ei ilmene materiaali- tai valmistusvirheitä normaalikäytössä.

MINOLTA-laitteen mukana hankittuja ohjelmistoja tai siihen liitettyjä muiden valmistajien ohjelmistoja koskevat vain kyseisten ohjelmistojen alkuperäiset takuehdot.

3. MINOLTAa koskevat velvoitteet

MINOLTA korjaa takuuajana ilmenevät viat tai vaihtaa laitteen uuteen mahdollisimman pian parhaaksi katsomallaan tavalla. Laitteen korvaaminen vastaavan arvoisella uudella laitteella tai sen korjaaminen ei vaikuta alkuperäiseen takuuajanaan. Takuuajana ei jatketa eikä sitä uusita. Jos MINOLTA ei pysty korjaamaan viallista tuotetta tai korvaamaan sitä uudella kohtuullisen ajan kuluessa, ostaja on oikeutettu saamaan ostohinnan takaisin, kun laite on palautettu myyjälle.

4. Takuun voimassaolo

Takuu koskee kaikkia valtuutetulta MINOLTA-myyjältä ostettuja uusia laitteita kaikissa maissa.

5. Takuun pohjalta esitettävät vaatimukset

Tämän takuun pohjalta esitettävät vaatimukset edellyttävät sitä, että esitetään kuitti, josta käy ilmi ostopäivä, -paikka ja -hinta, myyjän osoite, laitetyyppi ja laitteen sarjanumero. MINOLTA varaa oikeuden kuitenkin oikeellisuuden toteamiseen.

6. Takuiden voimassaoloehdot

Tämä takuu ei koske laitteille ja ohjelmistoille koituvia vahinkoja, jotka aiheutuvat

- pudottamisesta, iskusta, pölystä, kosteudesta, väärinkäytöstä, kolmannen osapuolen tekemien toimien aiheuttamista vahingoista, kemiallisesta syöpymisestä, käyttöohjeiden noudattamatta jättämisestä, kuljetuksessa aiheutuneista vahingoista tai Force Majeure -esteistä
- muiden yritysten kuin MINOLTA:n valmistamien, välittämien tai lisensoimien lisävarusteiden käytöstä tai muun kuin MINOLTA:n valtuuttaman tahon tekemistä korjaustoimista
- muiden kuin tähän tarkoitukseen soveltuvien laitteiden ja kolmannen osapuolen laitteiden tai materiaalien käytöstä sekä tähän tarkoitukseen sopimattomien tai muiden kuin suositeltujen tulostusmateriaalien käytöstä.

Ostaja vastaa kaikista tarkistuksista ja korjaustoimista aiheutuvista kuluista, jos jokin edellä mainituista ehdoista on voimassa.

Takuu ei kata MINOLTA:lle tai valtuutettuun MINOLTA-huoltopisteeseen tuotuja korjattavia laitteita, jos niissä ei ole korjattavia vikoja. Tällöin vian tarkistamisesta aiheutuvat kustannukset kuuluvat ostajalle.

Takuuajan päättymisen jälkeen esitettyjä takuuvaatimuksia ei käsitellä.

7. Taloudelliset menetykset

MINOLTA ei vastaa ostajalle koituvista suorista tai välillisistä taloudellisista menetyksistä riippumatta siitä, aiheutuvatko menetykset takuusopimuksen ehdoissa mainittujen velvollisuuksien tai yleensä sopimuksen rikkomisesta (mukaan lukien menetykset, jotka aiheutuvat laiminlyönnistä MINOLTA:n taholta). Seuraavassa on esimerkkejä suorista tai välillisistä taloudellisista menetyksistä:

- a. liikevoiton menetykset
- b. sopimusten menetykset
- c. ostajan tai muun osapuolen omaisuudelle aiheutuvat vahingot
- d. tietojen menetykset

8. Lain määräämät oikeudet

Tämä takuu ei vaikuta niihin oikeuksiin, jotka ostajalle on laissa määrätty.



- Often you can find the quickest solution to a problem or malfunction in the User Kit. Please refer to the chapter *Troubleshooting*.
- From our internet website (<http://www.service.minolta.de>) you can get the latest printer driver updates and answers to various questions.
- Minolta's hotline (see pages 10 and 11 in chapter *General Information*) supports you with the solution to many problems.
- Your technical representative will help you as well.

Please note the date of purchase (📅), the telephone hot-line (☎) and the serial number (#) on the sticker. In order to benefit from a quick and efficient support, you should always keep the sticker at hand, e.g. at the printerframe.